

Datasheet for ABIN949531
anti-SPC25 antibody (AA 1-224)



[Go to Product page](#)

2 Images

Overview

| | |
|----------------------|--------------------------------------|
| Quantity: | 50 µg |
| Target: | SPC25 |
| Binding Specificity: | AA 1-224 |
| Reactivity: | Human |
| Host: | Mouse |
| Clonality: | Polyclonal |
| Conjugate: | This SPC25 antibody is un-conjugated |
| Application: | Western Blotting (WB) |

Product Details

| | |
|-------------------|---|
| Purpose: | Mouse polyclonal antibody raised against a full-length human SPBC25 protein. |
| Immunogen: | SPBC25 (NP_065726.1, 1 a.a. ~ 224 a.a) full-length human protein. |
| Sequence: | MVEDELALFD KSINEFWNKF KSTDTSCQMA GLRDTYKDSI KAFAEKLSVK LKEEERMVEM FLEYQNQISR QNKLIQEKKD NLLKLIAEVK GKKQELEVELT ANIQDLKEEY SRKKETISTA NKANAERLKR LQKSADLYKD RLGLEIRKIY GEKLQFIFTN IDPKNPESPF MFSLHLNEAR DYEVS DSAPH LEGLAEFQEN VRKTNNFSAF LANVRKAFTA TVYN |
| Cross-Reactivity: | Human |
| Characteristics: | Antibody reactive against mammalian transfected lysate. |

Target Details

| | |
|---------|-------|
| Target: | SPC25 |
|---------|-------|

Target Details

| | |
|-------------------|---|
| Alternative Name: | SPC25 (SPC25 Products) |
| Background: | Full Gene Name: SPC25, NDC80 kinetochore complex component, homolog (<i>S. cerevisiae</i>) Synonyms: AD024,MGC22228,SPBC25 |
| Gene ID: | 57405 |
| NCBI Accession: | NM_020675 |

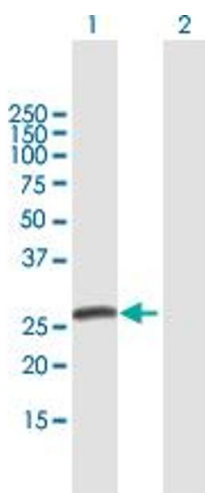
Application Details

| | |
|--------------------|--|
| Application Notes: | Optimal working dilution should be determined by the investigator. |
| Restrictions: | For Research Use only |

Handling

| | |
|------------------|--|
| Buffer: | In 1x PBS, pH 7.4 |
| Handling Advice: | Aliquot to avoid repeated freezing and thawing. |
| Storage: | -20 °C |
| Storage Comment: | Store at -20°C or lower. Aliquot to avoid repeated freezing and thawing. |

Images

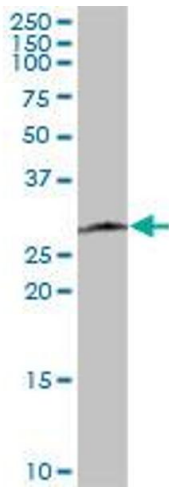


Western Blotting

Image 1. Western Blot analysis of SPC25 expression in transfected 293T cell line by SPC25 MaxPab polyclonal antibody.

Lane 1: SPBC25 transfected lysate(24.64 KDa).

Lane 2: Non-transfected lysate.



Western Blotting

Image 2. SPC25 MaxPab polyclonal antibody. Western Blot analysis of SPC25 expression in human kidney.