

Datasheet for ABIN949533
anti-ISY1 antibody (AA 1-285)



[Go to Product page](#)

1 Image

Overview

Quantity:	50 µg
Target:	ISY1
Binding Specificity:	AA 1-285
Reactivity:	Human
Host:	Mouse
Clonality:	Polyclonal
Conjugate:	This ISY1 antibody is un-conjugated
Application:	Western Blotting (WB)

Product Details

Purpose:	Mouse polyclonal antibody raised against a full-length human ISY1 protein.
Immunogen:	ISY1 (NP_065752.1, 1 a.a. ~ 285 a.a) full-length human protein.
Sequence:	MARNAEKAMT ALARFRQAQL EEGKVKERRP FLASECTELP KAEKWRRQII GEISKKVAQI QNAGLGEFRI RDLNDEINKL LREKGHWEVR IKELGGPDYG KVGPKMLDHE GKEVPGNRRGY KYFGAAKDLP GVRELFKEKP LPPPRKTRAE LMKAIKDFEYY GYLDEDDGVI VPLEQEYEEKK LRAELVEKWK AEREARLARG EKEEEEEEEEE EINIYAVTEE ESDEEGSQEK GGDDSQQKFI AHVPPVPSQQE IEEALVRRKK MELLQKYASE TLQAQSEEAR RLLGY
Cross-Reactivity:	Human
Characteristics:	Antibody reactive against mammalian transfected lysate.

Target Details

Target:	ISY1
Alternative Name:	ISY1 (ISY1 Products)
Background:	Full Gene Name: ISY1 splicing factor homolog (<i>S. cerevisiae</i>) Synonyms: KIAA1160, fSAP33
Gene ID:	57461
NCBI Accession:	NM_020701

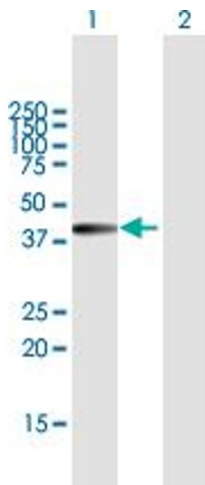
Application Details

Application Notes:	Optimal working dilution should be determined by the investigator.
Restrictions:	For Research Use only

Handling

Buffer:	In 1x PBS, pH 7.4
Handling Advice:	Aliquot to avoid repeated freezing and thawing.
Storage:	-20 °C
Storage Comment:	Store at -20°C or lower. Aliquot to avoid repeated freezing and thawing.

Images



Western Blotting

Image 1. Western Blot analysis of ISY1 expression in transfected 293T cell line by ISY1 MaxPab polyclonal antibody.

Lane 1: KIAA1160 transfected lysate(31.35 kDa).

Lane 2: Non-transfected lysate.