



[Go to Product page](#)

Datasheet for ABIN949554
anti-FAM60A antibody (AA 1-221)

2 Images

Overview

Quantity:	50 µg
Target:	FAM60A
Binding Specificity:	AA 1-221
Reactivity:	Human
Host:	Mouse
Clonality:	Polyclonal
Conjugate:	This FAM60A antibody is un-conjugated
Application:	Western Blotting (WB), Immunofluorescence (IF)

Product Details

Purpose:	Mouse polyclonal antibody raised against a full-length human FAM60A protein.
Immunogen:	FAM60A (NP_067061.1, 1 a.a. ~ 221 a.a) full-length human protein.
Sequence:	MFGFHKPKMY RSIEGCCICR AKSSSRFTD SKRYEKDFQS CFGLHETRSG DICNACVLLV KRWKKLPAGS KKNWNHVDA RAGPSLKTTL KPKKVKTLTG NRIKSNQISK LQKEFKRHNS DAHSTTSSAS PAQSPCYSNQ SDDGSDTEMA SGSNRTPVFS FLDLTYWKRQ KICCGIYKQ RFGEVLIDTH LFKPCCSNKK AAAEKPEEQG PEPLISTQE W
Cross-Reactivity:	Human
Characteristics:	Antibody reactive against mammalian transfected lysate.

Target Details

Target:	FAM60A
---------	--------

Target Details

Alternative Name:	FAM60A (FAM60A Products)
Background:	Full Gene Name: family with sequence similarity 60, member A Synonyms: C12orf14,L4,TERA
Gene ID:	58516
NCBI Accession:	NM_021238

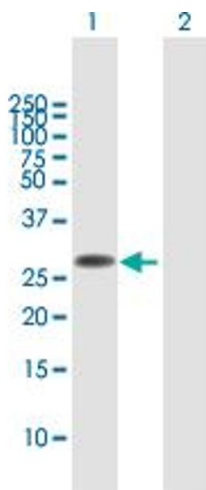
Application Details

Application Notes:	Optimal working dilution should be determined by the investigator.
Restrictions:	For Research Use only

Handling

Buffer:	In 1x PBS, pH 7.4
Handling Advice:	Aliquot to avoid repeated freezing and thawing.
Storage:	-20 °C
Storage Comment:	Store at -20°C or lower. Aliquot to avoid repeated freezing and thawing.

Images

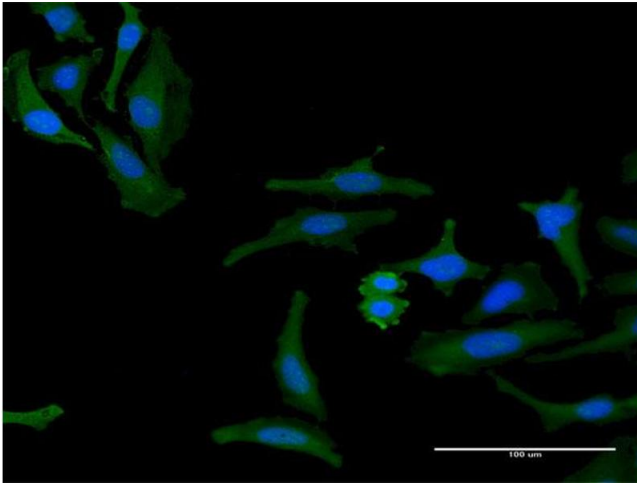


Western Blotting

Image 1. Western Blot analysis of FAM60A expression in transfected 293T cell line by FAM60A MaxPab polyclonal antibody.

Lane 1: FAM60A transfected lysate(24.31 KDa).

Lane 2: Non-transfected lysate.



Immunofluorescence

Image 2. Immunofluorescence of purified MaxPab antibody to FAM60A on HeLa cell. [antibody concentration 30 ug/ml]