



[Go to Product page](#)

Datasheet for ABIN949555
anti-m1ip1 antibody (AA 1-183)

1 Image

Overview

Quantity:	50 µg
Target:	m1ip1
Binding Specificity:	AA 1-183
Reactivity:	Human
Host:	Mouse
Clonality:	Polyclonal
Conjugate:	This m1ip1 antibody is un-conjugated
Application:	Western Blotting (WB)

Product Details

Purpose:	Mouse polyclonal antibody raised against a full-length human MID1IP1 protein.
Immunogen:	MID1IP1 (NP_067065, 1 a.a. ~ 183 a.a) full-length human protein.
Sequence:	MMQICDTYNQ KHSLFNAMNR FIGAVNNMDQ TVMVPSLLRD VPLADPGLDN DVGVEVGGSG GCLEERTPPV PDSGSANGSF FAPSRDMYSH YVLLKSIRND IEWGVLHQPP PPAGSEEGSA WKSKDILVDL GHLEGADAGE EDLEQQFHYH LRGLHTVLSK LTRKANILTN RYKQEIGFGN WGH
Cross-Reactivity:	Human
Characteristics:	Antibody reactive against mammalian transfected lysate.

Target Details

Target:	m1ip1
---------	-------

Target Details

Alternative Name:	MID1IP1 (m1ip1 Products)
Background:	Full Gene Name: MID1 interacting protein 1 (gastrulation specific G12 homolog (zebrafish)) Synonyms: FLJ10386,G12-like,MIG12,STRAIT11499,THRSPL
Gene ID:	58526
NCBI Accession:	NM_021242

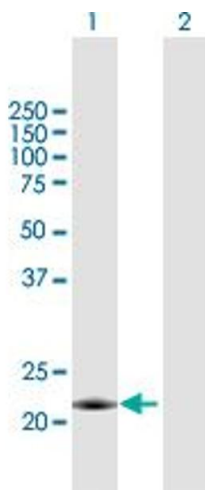
Application Details

Application Notes:	Optimal working dilution should be determined by the investigator.
Restrictions:	For Research Use only

Handling

Buffer:	In 1x PBS, pH 7.4
Handling Advice:	Aliquot to avoid repeated freezing and thawing.
Storage:	-20 °C
Storage Comment:	Store at -20°C or lower. Aliquot to avoid repeated freezing and thawing.

Images



Western Blotting

Image 1. Western Blot analysis of MID1IP1 expression in transfected 293T cell line by MID1IP1 MaxPab polyclonal antibody.

Lane 1: MID1IP1 transfected lysate(20.13 KDa).

Lane 2: Non-transfected lysate.