



[Go to Product page](#)

Datasheet for ABIN949558

anti-**PLEKHA1** antibody (AA 1-404)

1 Image

Overview

Quantity:	50 µg
Target:	PLEKHA1
Binding Specificity:	AA 1-404
Reactivity:	Human
Host:	Mouse
Clonality:	Polyclonal
Conjugate:	This PLEKHA1 antibody is un-conjugated
Application:	Western Blotting (WB)

Product Details

Purpose:	Mouse polyclonal antibody raised against a full-length human PLEKHA1 protein.
Immunogen:	PLEKHA1 (NP_001001974.1, 1 a.a. ~ 404 a.a) full-length human protein.
Sequence:	MPYVDRQNRI CGFLDIEENE NSGKFLRRYF ILDTREDSFV WYMDNPQNLP SGSSRVGAIK LTYISKVSDA TKLRPKAEFC FVMNAGMRKY FLQANDQQDL VEVVNVLNKA IKITVPKQSD SQPNSDNLSR HGECGKKQVS YRTDIVGGVP IITPTQKEEV NECGESIDRN NLKRSQSHLP YFTPKPPQDS AVIKAGYCVK QGAVMKNWKR RYFQLDENTI GYFKSELEKE PLRVIPLKEV HKVQECKQSD IMMRDNLFEI VTTSRTFYVQ ADSPEEMHSW IKAVSGAIVA QRGPGRSASS EHPPGPSESK HAFRPTNAAT ATSHSTASRS NSLVSTFTME KRGFYESLAK VKPGNFKVQT VSPREPASKV TEQALLRPQS KNGPQEKDCD LVDLDDASLP VSDV
Cross-Reactivity:	Human
Characteristics:	Antibody reactive against mammalian transfected lysate.

Target Details

Target:	PLEKHA1
Alternative Name:	PLEKHA1 (PLEKHA1 Products)
Background:	Full Gene Name: pleckstrin homology domain containing, family A (phosphoinositide binding specific) member 1 Synonyms: TAPP1
Gene ID:	59338
NCBI Accession:	NM_001001974
Pathways:	Platelet-derived growth Factor Receptor Signaling

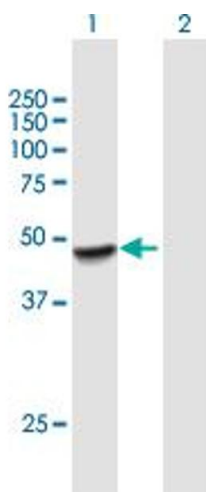
Application Details

Application Notes:	Optimal working dilution should be determined by the investigator.
Restrictions:	For Research Use only

Handling

Buffer:	In 1x PBS, pH 7.4
Handling Advice:	Aliquot to avoid repeated freezing and thawing.
Storage:	-20 °C
Storage Comment:	Store at -20°C or lower. Aliquot to avoid repeated freezing and thawing.

Images



Western Blotting

Image 1. Western Blot analysis of PLEKHA1 expression in transfected 293T cell line by PLEKHA1 MaxPab polyclonal antibody.

Lane 1: PLEKHA1 transfected lysate(44.44 KDa).

Lane 2: Non-transfected lysate.