

Datasheet for ABIN949559
anti-SEN2 antibody (AA 1-589)



[Go to Product page](#)

1 Image

Overview

| | |
|----------------------|-------------------------------------|
| Quantity: | 50 µg |
| Target: | SEN2 |
| Binding Specificity: | AA 1-589 |
| Reactivity: | Human |
| Host: | Mouse |
| Clonality: | Polyclonal |
| Conjugate: | This SEN2 antibody is un-conjugated |
| Application: | Western Blotting (WB) |

Product Details

| | |
|------------|---|
| Purpose: | Mouse polyclonal antibody raised against a full-length human SEN2 protein. |
| Immunogen: | SEN2 (NP_067640.2, 1 a.a. ~ 589 a.a) full-length human protein. |
| Sequence: | MYRWLVRLIG TIFRFCDSV PPARALLKRR RSDSTLFSTV DTDEIPAKRP RLDCFIHQVK NSLYNAASLF GPFQLTKP MVTACNGTR NVAPSGEVFS NSSCELTGS GSWNNMLKLG NKSPNGISDY PKIRVTVTRD QPRRVLPSFG FTLNSEGCNR RPGGRRHSGK NPESLMWKP QEAVTEMIS EESGKGLRRP HCTVEEGVQK EEREKYRKL ERLKESGHGN SVCPVTSNYH SSQRSQMDTL KTKGWGEEQN HGKTTQFVP KQYRLVETRG PLCSLRSEKR CSKGKITDTE TMVGIRFENE SRRGYQLEPD LSEEVSARLR LGSGSNGLLR RKVSIETKE KNCSGKERDR RTDDLLEL TE DMEKEISNAL GHGPQDEILS SAFKLRTIRG DIQTLKNYHW LNDEVINFYM NLLVERNKKQ GYPALHVFST FFYPKLKSGG YQAVKRWTKG VNLFEQEIIL VPIHRKVHWS LVVIDLRKKC LKYLDMSGQK GHRICEILLQ YLQDESKTKR NSDLNLEWT HHSMPHEIP QQLNGSDCGM FTCKYADYIS RDKPITFTQH QMPLFRKKMV WEILHQQLL |

Product Details

| | |
|-------------------|---|
| Cross-Reactivity: | Human |
| Characteristics: | Antibody reactive against mammalian transfected lysate. |

Target Details

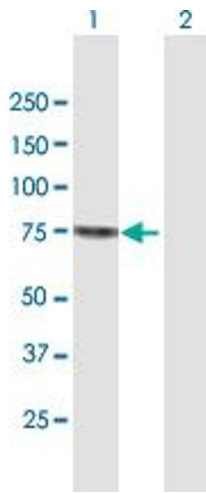
| | |
|-------------------|---|
| Target: | SENP2 |
| Alternative Name: | SENP2 (SENP2 Products) |
| Background: | Full Gene Name: SUMO1/sentrin/SMT3 specific peptidase 2 Synonyms: AXAM2,DKFZp762A2316,KIAA1331,SMT3IP2 |
| Gene ID: | 59343 |
| NCBI Accession: | NM_021627 |
| Pathways: | Chromatin Binding |

Application Details

| | |
|--------------------|--|
| Application Notes: | Optimal working dilution should be determined by the investigator. |
| Restrictions: | For Research Use only |

Handling

| | |
|------------------|--|
| Buffer: | In 1x PBS, pH 7.4 |
| Handling Advice: | Aliquot to avoid repeated freezing and thawing. |
| Storage: | -20 °C |
| Storage Comment: | Store at -20°C or lower. Aliquot to avoid repeated freezing and thawing. |



Western Blotting

Image 1. Western Blot analysis of SENP2 expression in transfected 293T cell line by SENP2 MaxPab polyclonal antibody.

Lane 1: SENP2 transfected lysate(67.90 KDa).

Lane 2: Non-transfected lysate.