

Datasheet for ABIN949566
anti-PCIF1 antibody (AA 1-704)



[Go to Product page](#)

2 Images

Overview

Quantity:	50 µg
Target:	PCIF1
Binding Specificity:	AA 1-704
Reactivity:	Human
Host:	Mouse
Clonality:	Polyclonal
Conjugate:	This PCIF1 antibody is un-conjugated
Application:	Western Blotting (WB), Immunofluorescence (IF)

Product Details

Purpose:	Mouse polyclonal antibody raised against a full-length human PCIF1 protein.
Immunogen:	PCIF1 (NP_071387.1, 1 a.a. ~ 704 a.a) full-length human protein.
Sequence:	MANENHGSPR EEASLLSHSP GTSNQSQPCS PKPIRLVQDL PEELVHAGWE KCWSRRENRP YYFNRFTNQS LWEMPVLGQH DVISDPLGLN ATPLPQDSSL VETPPAENKP RKRQLSEEQP SGNGVKKPKI EIPVTPTGQS VPSSPSIPGT PTLKMWGTSP EDKQQAALLR PTEVYWDLDI QTNAVIKHRG PSEVLPPHPE VELLRSQIL KLRQHYRELC QQREGIEPPR ESFNRWMLER KVVDKGS DPL LPSNCEPVVS PSMFREIMND IPIRLSRIKF REEAKRLLFK YAEAARLIE SRSASPDSRK VVKWNVEDTF SWLRKDHSAS KEDYMDRLEH LRRQCGPHVS AAKDSVEGI CSKIYHISLE YVKRIREKHL AILKENNISE EVEAPEVEPR LVYCYPVRLA VSAPPMPSVE MHMENNVC I RYK GEMVKVS RNYFSKLWLL YRYSCIDDSA FERFLPRVWC LLRRYQMMFG VGLYEGTGLQ GSLPVHVFEA LHRLFGVSFE CFASPLNCYF RQYCSAFPDT DGYFGSRGPC LDFAPLSGSF EANPPFCEEL MDAMVSHFER LLESSPEPLS FIVFIPEWRE PPTPALTRME

Product Details

QSRFKRHQLI LPAFEHEYRS GSQHICKKEE MHYKAVHNTA VLFLQNDPGF AKWAPTPERL
QELSAAYRQS GRSHSSGSSS SSSSEAKDRD SGREQGPSRE PHPT

Cross-Reactivity: Human

Characteristics: Antibody reactive against mammalian transfected lysate.

Target Details

Target: PCIF1

Alternative Name: PCIF1 ([PCIF1 Products](#))

Background: Full Gene Name: PDX1 C-terminal inhibiting factor 1
Synonyms: C20orf67

Gene ID: 63935

NCBI Accession: [NM_022104](#)

Application Details

Application Notes: Optimal working dilution should be determined by the investigator.

Restrictions: For Research Use only

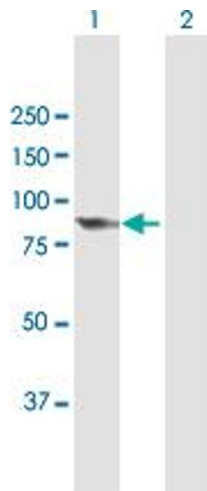
Handling

Buffer: In 1x PBS, pH 7.4

Handling Advice: Aliquot to avoid repeated freezing and thawing.

Storage: -20 °C

Storage Comment: Store at -20°C or lower. Aliquot to avoid repeated freezing and thawing.

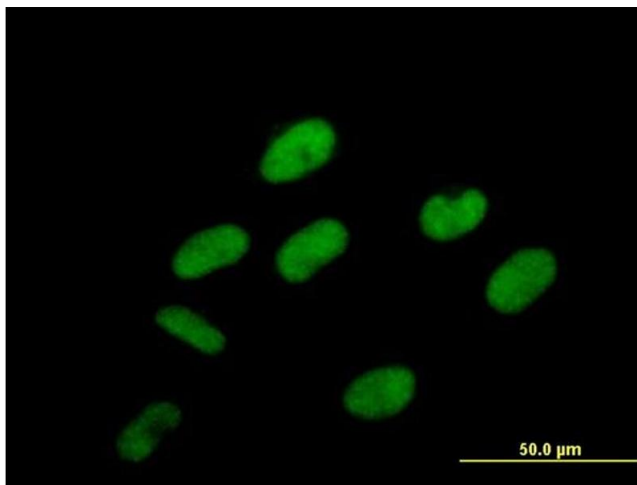


Western Blotting

Image 1. Western Blot analysis of PCIF1 expression in transfected 293T cell line by PCIF1 MaxPab polyclonal antibody.

Lane 1: C20orf67 transfected lysate(77.44 KDa).

Lane 2: Non-transfected lysate.



Immunofluorescence

Image 2. Immunofluorescence of purified MaxPab antibody to C20orf67 on HeLa cell. [antibody concentration 10 ug/ml]