



[Go to Product page](#)

Datasheet for ABIN949568

## anti-DMRTB1 antibody (AA 1-189)

### 1 Image

#### Overview

Quantity:	50 µg
Target:	DMRTB1
Binding Specificity:	AA 1-189
Reactivity:	Human
Host:	Mouse
Clonality:	Polyclonal
Conjugate:	This DMRTB1 antibody is un-conjugated
Application:	Western Blotting (WB)

#### Product Details

Purpose:	Mouse polyclonal antibody raised against a full-length human DMRTB1 protein.
Immunogen:	DMRTB1 (AAH29566.1, 1 a.a. ~ 189 a.a) full-length human protein.
Sequence:	MPSLAGPPFG AEAAGSGYPG PLDLRRPMRT VPGPLFTDFV RPLNINPDRA LGPEYPPGGSS MHPYCPFPLG YLDAPPGVPL QQGFRHVSRS QYQGGGLVSE PGGDFQPSYY LPPPPPLPP LPPLPPQPQF LPPGYLSALH FLPPPPPPPP PSSFSLTVLF DTDKENTDDQ DAEVLSGEPs QPSSQEQSD
Cross-Reactivity:	Human
Characteristics:	Antibody reactive against mammalian transfected lysate.

#### Target Details

Target:	DMRTB1
---------	--------

## Target Details

Alternative Name:	DMRTB1 ( <a href="#">DMRTB1 Products</a> )
Background:	Full Gene Name: DMRT-like family B with proline-rich C-terminal, 1 Synonyms:
Gene ID:	63948

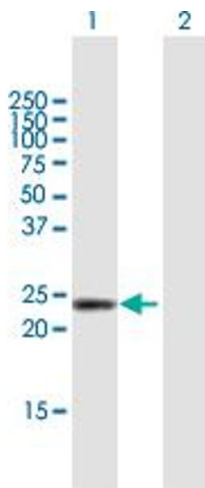
## Application Details

Application Notes:	Optimal working dilution should be determined by the investigator.
Restrictions:	For Research Use only

## Handling

Buffer:	In 1x PBS, pH 7.4
Handling Advice:	Aliquot to avoid repeated freezing and thawing.
Storage:	-20 °C
Storage Comment:	Store at -20°C or lower. Aliquot to avoid repeated freezing and thawing.

## Images



### Western Blotting

**Image 1.** Western Blot analysis of DMRTB1 expression in transfected 293T cell line by DMRTB1 MaxPab polyclonal antibody.

Lane 1: DMRTB1 transfected lysate(20.10 KDa).

Lane 2: Non-transfected lysate.