



[Go to Product page](#)

Datasheet for ABIN949583

anti-KIF9 antibody (AA 691-789)

2 Images

Overview

Quantity:	100 µg
Target:	KIF9
Binding Specificity:	AA 691-789
Reactivity:	Human
Host:	Mouse
Clonality:	Monoclonal
Conjugate:	This KIF9 antibody is un-conjugated
Application:	Western Blotting (WB), ELISA

Product Details

Purpose:	Mouse monoclonal antibody raised against a partial recombinant KIF9.
Immunogen:	KIF9 (NP_878905.1, 691 a.a. ~ 789 a.a) partial recombinant protein with GST tag. MW of the GST tag alone is 26 KDa.
Sequence:	VDQCRHRLLM EFDIWYNESF VIPEDMQMAL KPGGSIRPGM VPVNRIVSLG EDDQDKFSQL QQRVLPEGPD SISFYNAKVK IEQKHNYLKT MMGLQQAHR
Clone:	4E9
Isotype:	IgG2a
Cross-Reactivity:	Human
Characteristics:	Antibody Reactive Against Recombinant Protein.

Target Details

Target:	KIF9
Alternative Name:	KIF9 (KIF9 Products)
Background:	Full Gene Name: kinesin family member 9 Synonyms: MGC104186
Gene ID:	64147
NCBI Accession:	NM_182902

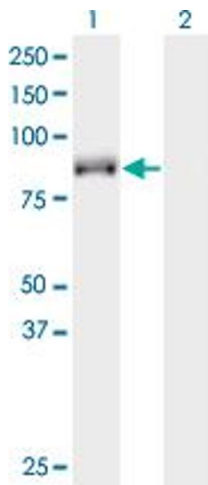
Application Details

Application Notes:	Optimal working dilution should be determined by the investigator.
Restrictions:	For Research Use only

Handling

Buffer:	In 1x PBS, pH 7.4
Handling Advice:	Aliquot to avoid repeated freezing and thawing.
Storage:	-20 °C
Storage Comment:	Store at -20°C or lower. Aliquot to avoid repeated freezing and thawing.

Images

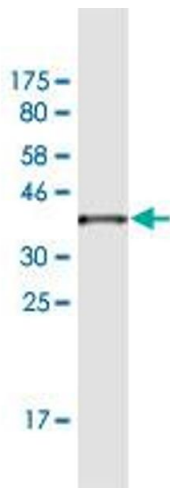


Western Blotting

Image 1. Western Blot analysis of KIF9 expression in transfected 293T cell line by KIF9 monoclonal antibody (M07), clone 4E9.

Lane 1: KIF9 transfected lysate(86.9 kDa).

Lane 2: Non-transfected lysate.



Western Blotting

Image 2. Western Blot detection against Immunogen (36.63 kDa).