



[Go to Product page](#)

Datasheet for ABIN949585

anti-Sema4a antibody (AA 1-761)

2 Images

Overview

Quantity:	100 µL
Target:	Sema4a
Binding Specificity:	AA 1-761
Reactivity:	Human
Host:	Rabbit
Clonality:	Polyclonal
Conjugate:	This Sema4a antibody is un-conjugated
Application:	Western Blotting (WB), Immunoprecipitation (IP)

Product Details

Purpose:	Rabbit polyclonal antibody raised against a full-length human SEMA4A protein.
Immunogen:	SEMA4A (NP_071762.2, 1 a.a. ~ 761 a.a) full-length human protein.
Sequence:	MALPALGLDP WLLGLFLFQ LLQLLLPTTT AGGGGQGPMP RVRYYAGDER RALSFFHQKG LQDFDTLLLS GDGNTLYVGA REAILALDIQ DPGVPRLKNM IPWPASDRKK SECAFKKKSN ETQCFNFIRV LVSYNVTHLY TCGTFAFSPA CTFIELQDSY LLPISEDKVM EGKGQSPFDP AHKHTAVLVD GMLYSGTMNN FLGSEPILMR TLGSQPVLKT DNFLRWLHHD ASFVAAIPST QVVYFFFEET ASEFDFFERL HTSRVARVCK NDVGGEKLLQ KKWTTFLKAQ LLCTQPGQLP FNVIRHAVLL PADSPTAPHI YAVFTSQWQV GGTRSSAVCA FSLLDIERVF KGKYKELNKE TSRWTTYRGP ETNPRPGSCS VGPSSDKALT FMKDHFLMDE QVVGTPLLVK SGVEYTRLAV ETAQGLDGHS HLVMYLGTTT GSLHKAVVSG DSSAHLVEEI QLFPDPEPVR NLQLAPTQGA VFGVFSGGVW RVPRANCSVY ESCVDCVLAR DPHCAWDPEP RTCCLLSAPN LNSWKQDMER GNPEWACASG PMSRSLRPQS RPQIIKEVLA VPNSILELPC PHLASALASY WSHGPAAVPE

Product Details

ASSTVYNGSL LLIVQDGVGG LYQCWATENG FSYPVISYWV DSQDQTLALD PELAGIPREH
VKVPLTRVSG GAALAAQSY WPHFVTVTVL FALVLSGALI ILVASPLRAL RARGKVQGCE
TLRPGEKAPL SREQHLQSPK ECRTSASDVD ADNCLGTEV A

Cross-Reactivity: Human

Characteristics: Antibody reactive against mammalian transfected lysate.

Target Details

Target: Sema4a

Alternative Name: SEMA4A ([Sema4a Products](#))

Background: Full Gene Name: sema domain, immunoglobulin domain (Ig), transmembrane domain (TM) and short cytoplasmic domain, (semaphorin) 4A

Synonyms: CORD10,FLJ12287,RP35,SEMAB,SEMB

Gene ID: 64218

NCBI Accession: [NM_022367](#)

Application Details

Application Notes: Optimal working dilution should be determined by the investigator.

Restrictions: For Research Use only

Handling

Format: Liquid

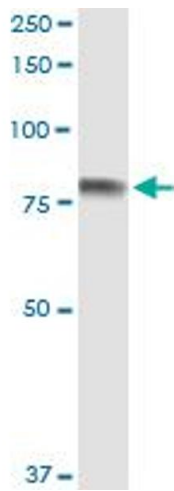
Buffer: No additive

Preservative: Without preservative

Handling Advice: Aliquot to avoid repeated freezing and thawing.

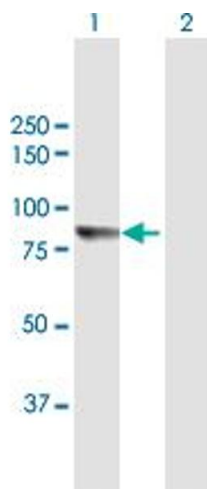
Storage: -20 °C

Storage Comment: Store at -20°C or lower. Aliquot to avoid repeated freezing and thawing.



Immunoprecipitation

Image 1. Immunoprecipitation of SEMA4A transfected lysate using anti-SEMA4A MaxPab rabbit polyclonal antibody and Protein A Magnetic Bead, and immunoblotted with SEMA4A purified MaxPab mouse polyclonal antibody (B01P).



Western Blotting

Image 2. Western Blot analysis of SEMA4A expression in transfected 293T cell line by SEMA4A MaxPab polyclonal antibody.

Lane 1: SEMA4A transfected lysate(83.6 KDa).

Lane 2: Non-transfected lysate.