

Datasheet for ABIN949595
anti-MPP5 antibody (AA 1-675)



[Go to Product page](#)

2 Images

Overview

Quantity:	100 µg
Target:	MPP5
Binding Specificity:	AA 1-675
Reactivity:	Human
Host:	Rabbit
Clonality:	Polyclonal
Conjugate:	This MPP5 antibody is un-conjugated
Application:	Western Blotting (WB), Immunofluorescence (IF)

Product Details

Purpose:	Rabbit polyclonal antibody raised against a full-length human MPP5 protein.
Immunogen:	MPP5 (NP_071919.2, 1 a.a. ~ 675 a.a) full-length human protein.
Sequence:	MTTSHMNGHV TEESDSEVKN VDLASPEEHQ KHREMAVDCP GDLGTRMMPI RRSACLERIR QQQEDMRRRR EEEGKKQELD LNSSMRLKKL AQIPPKTGID NPMFDTEEGI VLESPHYAVK ILEIEDLFSS LKHIQHTLVD SQSQEDISLL LQLVQNKDFQ NAFKIHNAT VHMNKASPPF PLISNAQDLA QEVQTVLKPV HHKEGQELTA LLNTPHIQAL LLAHDKVAEQ EMQLEPITDE RVYESIGQYG GETVKIVRIE KARDIPLGAT VRNEMDSVII SRIVKGGAAE KSGLLHEGDE VLEINGIEIR GKDVNEVFDL LSDMHGTLTF VLIPSQQIKP PPAKETVIHV KAHFDYDPSD DPYVPCRELG LSFQKGDILH VISQEDPNWW QAYREGDEDN QPLAGLVPGK SFQQQREAMK QTIEEDKEPE KSGKLWCAKK NKKKRKKVLY NANKNDDYDN EELTYEEMS LYHQPANRKR PIILIGPQNC GQNELRQRLM NKEKDRFASA VPHTTRSRRD QEVAGRDYHF VSRQAFEADI AAGKFIEHGE FEKNLYGTSI DSVRQVINSK KICLLSLRTQ SLKTLRNSDL KPYIIFIAPP

Product Details

SQERLRALLA KEGKNPKPEE LREIIIEKTRE MEQNNGHYFD TAVNSDLDK AYQELLRLIN
KLDTEPQWVP STWLR

Cross-Reactivity: Human

Characteristics: Antibody reactive against mammalian transfected lysate.

Target Details

Target: MPP5

Alternative Name: MPP5 ([MPP5 Products](#))

Background: Full Gene Name: membrane protein, palmitoylated 5 (MAGUK p55 subfamily member 5)
Synonyms: FLJ12615,PALS1

Gene ID: 64398

NCBI Accession: [NM_022474](#)

Pathways: [Nucleotide Phosphorylation](#), [Tube Formation](#), [Asymmetric Protein Localization](#)

Application Details

Application Notes: Optimal working dilution should be determined by the investigator.

Restrictions: For Research Use only

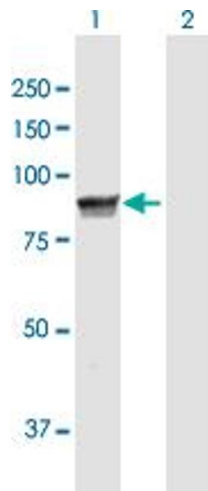
Handling

Buffer: In 1x PBS, pH 7.4

Handling Advice: Aliquot to avoid repeated freezing and thawing.

Storage: -20 °C

Storage Comment: Store at -20°C or lower. Aliquot to avoid repeated freezing and thawing.

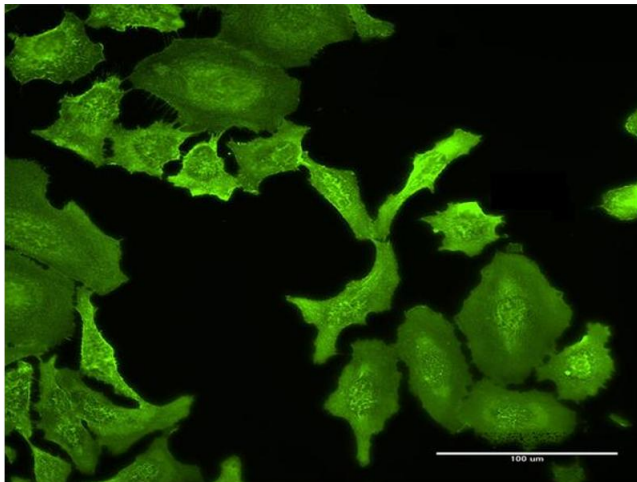


Western Blotting

Image 1. Western Blot analysis of MPP5 expression in transfected 293T cell line by MPP5 MaxPab polyclonal antibody.

Lane 1: MPP5 transfected lysate(77.30 KDa).

Lane 2: Non-transfected lysate.



Immunofluorescence

Image 2. Immunofluorescence of purified MaxPab antibody to MPP5 on HeLa cell. [antibody concentration 10 ug/ml]