



[Go to Product page](#)

Datasheet for ABIN949600  
**anti-NUCKS1 antibody (AA 1-243)**

3 Images

Overview

Quantity:	100 µg
Target:	NUCKS1
Binding Specificity:	AA 1-243
Reactivity:	Human
Host:	Mouse
Clonality:	Monoclonal
Conjugate:	This NUCKS1 antibody is un-conjugated
Application:	Western Blotting (WB), ELISA, Immunofluorescence (IF)

Product Details

Purpose:	Mouse monoclonal antibody raised against a full-length recombinant NUCKS1.
Immunogen:	NUCKS1 (NP_073568.2, 1 a.a. ~ 243 a.a) full-length recombinant protein with GST tag. MW of the GST tag alone is 26 KDa.
Sequence:	MSRPVRNRKV VDYSQFQESD DADEDYGRDS GPPTKKIRSS PREAKNKRRS GKNSQEDSED SEDKDVKTKK DDSHSAEDSE DEKEDHKNVR QQRQAASKAA SKQREMLMED VGSEEEQEEE DEAPFQEKDS GSDEDFLMED DDDSDYGSSK KKNKMKVKKK KPERKEKKMP KPRLKATVTP SPVKGKGKVG RPTASKASKE KTPSPKEEDE EPESPPEKKT STSPPPEKSG DEGSEDEAPS GED
Clone:	3G10
Isotype:	IgG2a
Cross-Reactivity:	Human

## Product Details

Characteristics: Antibody Reactive Against Recombinant Protein.

## Target Details

Target: NUCKS1

Alternative Name: NUCKS1 ([NUCKS1 Products](#))

Background: Full Gene Name: nuclear casein kinase and cyclin-dependent kinase substrate 1  
Synonyms: FLJ21480,FLJ32016,FLJ38536,JC7,NUCKS

Gene ID: 64710

NCBI Accession: [NM\\_022731](#)

## Application Details

Application Notes: Optimal working dilution should be determined by the investigator.

Restrictions: For Research Use only

## Handling

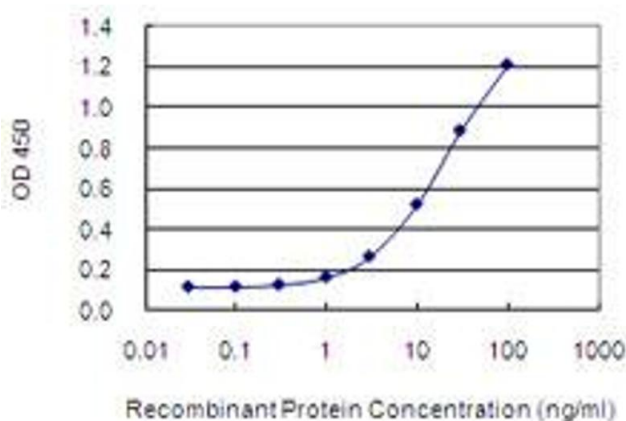
Buffer: In 1x PBS, pH 7.4

Handling Advice: Aliquot to avoid repeated freezing and thawing.

Storage: -20 °C

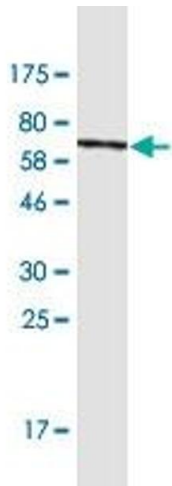
Storage Comment: Store at -20°C or lower. Aliquot to avoid repeated freezing and thawing.

## Images



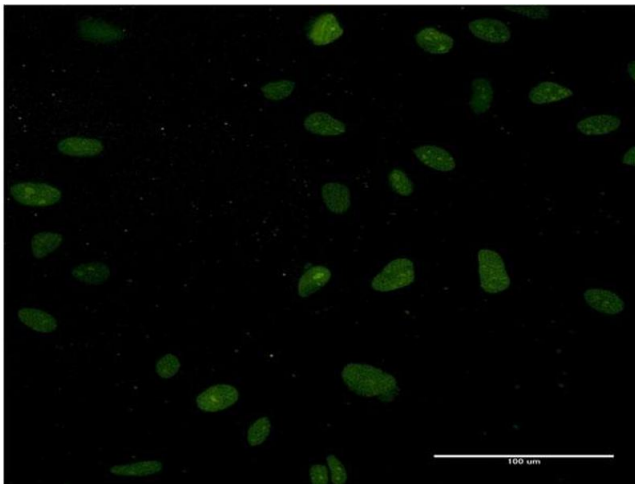
### ELISA

**Image 1.** Detection limit for recombinant GST tagged NUCKS1 is 0.3 ng/ml as a capture antibody.



### Western Blotting

**Image 2.** Western Blot detection against Immunogen (53.7 kDa).



### Immunofluorescence

**Image 3.** Immunofluorescence of monoclonal antibody to NUCKS1 on HeLa cell. [antibody concentration 10 μg/ml]