

Datasheet for ABIN949601
anti-EPS8-Like 2 antibody (AA 1-715)



[Go to Product page](#)

2 Images

Overview

| | |
|----------------------|---|
| Quantity: | 100 µL |
| Target: | EPS8-Like 2 (EPS8L2) |
| Binding Specificity: | AA 1-715 |
| Reactivity: | Human |
| Host: | Rabbit |
| Clonality: | Polyclonal |
| Conjugate: | This EPS8-Like 2 antibody is un-conjugated |
| Application: | Western Blotting (WB), Immunoprecipitation (IP) |

Product Details

| | |
|------------|---|
| Purpose: | Rabbit polyclonal antibody raised against a full-length human EPS8L2 protein. |
| Immunogen: | EPS8L2 (NP_073609.2, 1 a.a. ~ 715 a.a) full-length human protein. |
| Sequence: | MSQSGAVSCC PGATNGSLGR SDGVAKMSPK DLFEQRKKYS NSNVIMHETS QYHVQHLATF IMDKSEAITV VDDAIRKLVQ LSSKEKIWTQ EMLLQVNDQS LRLLDIESQE ELEDFFPLPTV QRSQTVLNQL RYPSVLLLVC QDSEQSKPDV HFFHCDEVEA ELVHEDIESA LADCRLGKKM RPQTLKGHQE KIRQRQSILP PPQGPAPIPF QHRGGDSPEA KNRVGPQVPL SEPGFRRRES QEEPRAVLAQ KIEKETQILN CALDDIEWFV ARLQKAAEAF KQLNQKKGK KKGKKAPAEG VLTLRARPPS EGEFIDCFQK IKLAINLLAK LQKHIQNPSA AELVHFLFGP LDIVNTCSG PDIARVSCP LLSRDAVDL RGHLPKEMS LWESLGESWM RPRSEWPREP QVPLYVPKFH SGWEPPVDVL QEAPWEVEGL ASAPIEEVSP VSRQSIRNSQ KHSPTSEPTP PGDALPPVSS PHTHRGYQPT PAMAKYVKIL YDFTARNANE LSVLKDEVLE VLEDGRQWWK LRSRSGQAGY VPCNILGEAR PEDAGAPFEQ AGQKYWGPAS PTHKLPSPF GNKDELMQHM DEVNDELIRK |

Product Details

ISNIRAQPQR HFRVERSQPV SQPLTYESGP DEVRAWLEAK AFSPRIVENL GILTPQLFS
LNKEELKKVC GEEGVRVYSQ LTMQKAFLEK QQSGSELEEL MNKFHSMNQR RGEDS

Cross-Reactivity: Human

Characteristics: Antibody reactive against mammalian transfected lysate.

Target Details

Target: EPS8-Like 2 (EPS8L2)

Alternative Name: EPS8L2 ([EPS8L2 Products](#))

Background: Full Gene Name: EPS8-like 2
Synonyms: EPS8R2,FLJ16738,FLJ21935,FLJ22171,MGC126530,MGC3088

Gene ID: 64787

NCBI Accession: [NM_022772](#)

Application Details

Application Notes: Optimal working dilution should be determined by the investigator.

Restrictions: For Research Use only

Handling

Format: Liquid

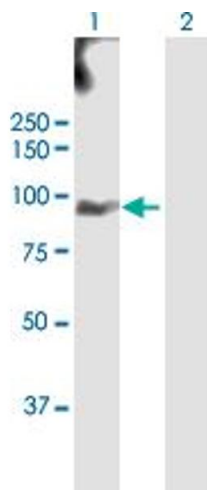
Buffer: No additive

Preservative: Without preservative

Handling Advice: Aliquot to avoid repeated freezing and thawing.

Storage: -20 °C

Storage Comment: Store at -20°C or lower. Aliquot to avoid repeated freezing and thawing.

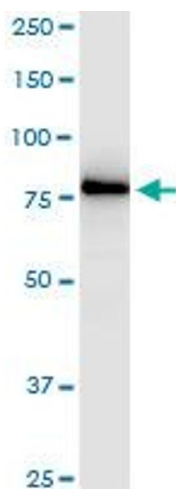


Western Blotting

Image 1. Western Blot analysis of EPS8L2 expression in transfected 293T cell line by EPS8L2 MaxPab polyclonal antibody.

Lane 1: EPS8L2 transfected lysate(80.6 kDa).

Lane 2: Non-transfected lysate.



Immunoprecipitation

Image 2. Immunoprecipitation of EPS8L2 transfected lysate using anti-EPS8L2 MaxPab rabbit polyclonal antibody and Protein A Magnetic Bead , and immunoblotted with EPS8L2 purified MaxPab mouse polyclonal antibody (B01P) .