



[Go to Product page](#)

Datasheet for ABIN949605  
**anti-SLC26A6 antibody (AA 1-758)**

2 Images

Overview

Quantity:	100 µL
Target:	SLC26A6
Binding Specificity:	AA 1-758
Reactivity:	Human
Host:	Rabbit
Clonality:	Polyclonal
Conjugate:	This SLC26A6 antibody is un-conjugated
Application:	Western Blotting (WB), Immunoprecipitation (IP)

Product Details

Purpose:	Rabbit polyclonal antibody raised against a full-length human SLC26A6 protein.
Immunogen:	SLC26A6 (NP_599025.2, 1 a.a. ~ 758 a.a) full-length human protein.
Sequence:	MGLADASGPR DTQALLSATQ AMDLRRRDYH MERPLLNQEHL EELGRWGSA PRTHQWRTWL QCSRARAYAL LLQHLPVLVW LPRYPVRDWL LGDLLSGLSV AIMQLPQGLA YALLAGLPPV FGLYSSFYPV FIYFLFGTSR HISVGTFAVM SVMVGSVTES LAPQALNDSM INETARDAAR VQVASTLSVL VGLFQVGLGL IHFGFVVTYL SEPLVRGYTT AAVQVFVSQ LKYVFGHLHLS SHSGPLSLIY TVLEVCWKLP QSKVGTVVTA AVAGVVLVVV KLLNDKLQOQ LPMPIPGELL TLIGATGISY GMGLKHRFEV DVVGNIPAGL VPPVAPNTQL FSKLVGSAFT IAVVGFAIAI SLGKIFALRH GYRVDSNQEL VALGLSNLIG GIFQCFPVSC SMSRSLVQES TGGNSQVAGA ISSLFILLII VKLGELFHDL PKAVLAAIII VNLKGMLRQL SDMRSLWKAN RADLLIWLVT FTATILLNLD LGLVAVIFS LLLVVVRTQM PHYSVLGQVP DTDIYRDVAE YSEAKEVRGV KVFRSSATVY FANAEFYSDA LKQRCGVDVD FLISQKKKLL KKQEQLKLLKQ LQKEEKLKQ AASPKGASVS

## Product Details

---

INVNTSLEDM RSNNVEDCKM MVSSGDKMED ATANGQEDSK APDGSTLKAL GLPQPDFHSL  
ILDLGALSFV DTVCLKSLKN IFHDFREIEV EVYMAACHSP VVSQLEAGHF FDASITKKHL  
FASVHDAVTF ALQHPRPVPD SPVSVTRL

Cross-Reactivity: Human

Characteristics: Antibody reactive against mammalian transfected lysate.

## Target Details

---

Target: SLC26A6

Alternative Name: SLC26A6 ([SLC26A6 Products](#))

Background: Full Gene Name: solute carrier family 26, member 6  
Synonyms: DKFZp586E1422

Gene ID: 65010

NCBI Accession: [NM\\_134263](#)

Pathways: [Dicarboxylic Acid Transport](#)

## Application Details

---

Application Notes: Optimal working dilution should be determined by the investigator.

Restrictions: For Research Use only

## Handling

---

Format: Liquid

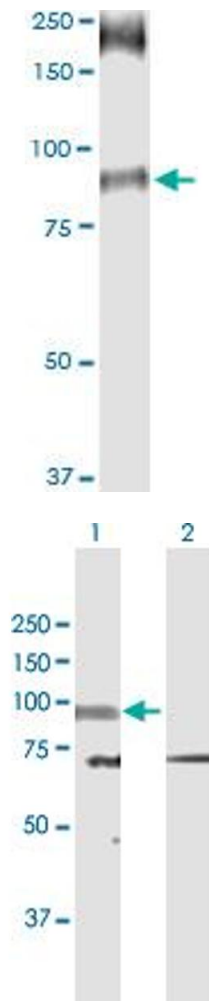
Buffer: No additive

Preservative: Without preservative

Handling Advice: Aliquot to avoid repeated freezing and thawing.

Storage: -20 °C

Storage Comment: Store at -20°C or lower. Aliquot to avoid repeated freezing and thawing.



### Immunoprecipitation

**Image 1.** Immunoprecipitation of SLC26A6 transfected lysate using anti-SLC26A6 MaxPab rabbit polyclonal antibody and Protein A Magnetic Bead, and immunoblotted with SLC26A6 purified MaxPab mouse polyclonal antibody (B01P).

### Western Blotting

**Image 2.** Western Blot analysis of SLC26A6 expression in transfected 293T cell line by SLC26A6 MaxPab polyclonal antibody.

Lane 1: SLC26A6 transfected lysate(82.8 KDa).

Lane 2: Non-transfected lysate.