



[Go to Product page](#)

Datasheet for ABIN949635

anti-BRCC3 antibody (AA 1-316)

2 Images

Overview

Quantity:	50 µg
Target:	BRCC3
Binding Specificity:	AA 1-316
Reactivity:	Human
Host:	Mouse
Clonality:	Polyclonal
Conjugate:	This BRCC3 antibody is un-conjugated
Application:	Western Blotting (WB), Immunofluorescence (IF)

Product Details

Purpose:	Mouse polyclonal antibody raised against a full-length human BRCC3 protein.
Immunogen:	BRCC3 (NP_077308.1, 1 a.a. ~ 316 a.a) full-length human protein.
Sequence:	MAVQVVQAVQ AVHLESDAFL VCLNHALSTE KEEVMGLCIG ELNDDTRSDS KFAYTGTEMR TVAEKVDAVR IVHIHSVIL RRSDKRKDRV EISPEQLSAA STEAERLAEL TGRPMRVVWG YHSHPHITVW PSHVDVRTQA MYQMMDQGFV GLIFSCFIED KNTKTGRVLY TCFQSIQAQK SSESLHGPRD FWSSSQHISI EGQKEEERYE RIEIPIHVP HVTIGKVCLE SAVELPKILC QEEQDAYRRI HSLTHLDSVT KIHNGSVFTK NLCSQMSAVS GPLLQWLEDR LEQNQQHLQE LQKEEELMQ ELSSLE
Cross-Reactivity:	Human
Characteristics:	Antibody reactive against mammalian transfected lysate.

Target Details

Target:	BRCC3
Alternative Name:	BRCC3 (BRCC3 Products)
Background:	Full Gene Name: BRCA1/BRCA2-containing complex, subunit 3 Synonyms: BRCC36,C6.1A,CXorf53
Gene ID:	79184
NCBI Accession:	NM_024332
Pathways:	Positive Regulation of Response to DNA Damage Stimulus

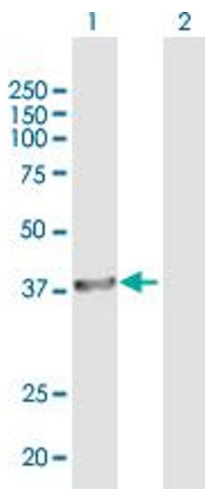
Application Details

Application Notes:	Optimal working dilution should be determined by the investigator.
Restrictions:	For Research Use only

Handling

Buffer:	In 1x PBS, pH 7.4
Handling Advice:	Aliquot to avoid repeated freezing and thawing.
Storage:	-20 °C
Storage Comment:	Store at -20°C or lower. Aliquot to avoid repeated freezing and thawing.

Images



Western Blotting

Image 1. Western Blot analysis of BRCC3 expression in transfected 293T cell line by BRCC3 MaxPab polyclonal antibody.

Lane 1: BRCC3 transfected lysate(34.76 KDa).

Lane 2: Non-transfected lysate.



Immunofluorescence

Image 2. Immunofluorescence of purified MaxPab antibody to BRCC3 on HeLa cell. [antibody concentration 10 ug/ml]