



[Go to Product page](#)

Datasheet for ABIN949638

anti-ZBED2 antibody (AA 1-218)

1 Image

Overview

Quantity:	50 µg
Target:	ZBED2
Binding Specificity:	AA 1-218
Reactivity:	Human
Host:	Mouse
Clonality:	Polyclonal
Conjugate:	This ZBED2 antibody is un-conjugated
Application:	Western Blotting (WB)

Product Details

Purpose:	Mouse polyclonal antibody raised against a full-length human ZBED2 protein.
Immunogen:	ZBED2 (NP_078784.2, 1 a.a. ~ 218 a.a) full-length human protein.
Sequence:	MMRREDEEEE GTMMKAKGDL EMKEEEEISE TGELVGPVFS AMPTPMPHMK GTRFSEAWAY FHLAPARAGH HPNQYATCRL CGRQVSRGPG VNVGTTALWK HLKSMHREEL EKSGHGQAGQ RQDPRPHGPQ LPTGIEGNWG RLLEQVGTMA LWASQREKEV LRRERAVEWR ERAVEKRERA LEEVEVAILE MKWKVRAEKE ACQREKELPA AVHPFHFV
Cross-Reactivity:	Human
Characteristics:	Antibody reactive against mammalian transfected lysate.

Target Details

Target:	ZBED2
---------	-------

Target Details

Alternative Name:	ZBED2 (ZBED2 Products)
Background:	Full Gene Name: zinc finger, BED-type containing 2 Synonyms: MGC10796
Gene ID:	79413
NCBI Accession:	NM_024508

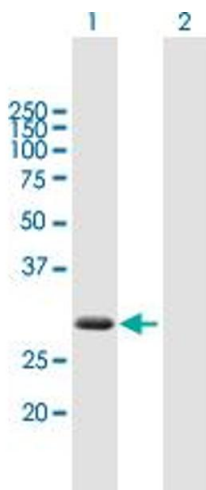
Application Details

Application Notes:	Optimal working dilution should be determined by the investigator.
Restrictions:	For Research Use only

Handling

Buffer:	In 1x PBS, pH 7.4
Handling Advice:	Aliquot to avoid repeated freezing and thawing.
Storage:	-20 °C
Storage Comment:	Store at -20°C or lower. Aliquot to avoid repeated freezing and thawing.

Images



Western Blotting

Image 1. Western Blot analysis of ZBED2 expression in transfected 293T cell line by ZBED2 MaxPab polyclonal antibody.

Lane 1: ZBED2 transfected lysate(23.98 KDa).

Lane 2: Non-transfected lysate.