



Datasheet for ABIN949668
anti-SPSB1 antibody (AA 1-273)



[Go to Product page](#)

1 Image

Overview

Quantity:	50 µg
Target:	SPSB1
Binding Specificity:	AA 1-273
Reactivity:	Human
Host:	Mouse
Clonality:	Polyclonal
Conjugate:	This SPSB1 antibody is un-conjugated
Application:	Western Blotting (WB)

Product Details

Purpose:	Mouse polyclonal antibody raised against a full-length human SPSB1 protein.
Immunogen:	SPSB1 (AAH15711.1, 1 a.a. ~ 273 a.a) full-length human protein.
Sequence:	MGQKVTGGIK TVDMRDPTYR PLKQELQGLD YCKPTRLDLL LDMPPVSYDV QLLHSWNNND RSLNVFVKED DKLIFHRHPV AQSTDAIRGK VGYTRGLHVW QITWAMRQRG THAVGVATA DAPLHSVGYT TLVGNNHESW GWDLGRNRLY HDDKNQPSKT YPAFLEPDET FIVPDSFLVA LDMDDGTLSE IVDGQYMGVA FRGLKGKKLY PVVSAVWGHC EIRMRYLNGL DPEPLPLMDL CRRSVRLALG RERLGEIHTL PLPASLKAYL LYQ
Cross-Reactivity:	Human
Characteristics:	Antibody reactive against mammalian transfected lysate.

Target Details

Target:	SPSB1
Alternative Name:	SPSB1 (SPSB1 Products)
Background:	Full Gene Name: splA/ryanodine receptor domain and SOCS box containing 1 Synonyms: SSB-1,SSB1
Gene ID:	80176

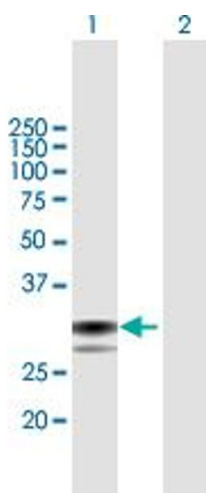
Application Details

Application Notes:	Optimal working dilution should be determined by the investigator.
Restrictions:	For Research Use only

Handling

Buffer:	In 1x PBS, pH 7.4
Handling Advice:	Aliquot to avoid repeated freezing and thawing.
Storage:	-20 °C
Storage Comment:	Store at -20°C or lower. Aliquot to avoid repeated freezing and thawing.

Images



Western Blotting

Image 1. Western Blot analysis of SPSB1 expression in transfected 293T cell line by SPSB1 MaxPab polyclonal antibody.

Lane 1: SPSB1 transfected lysate(30.14 KDa).

Lane 2: Non-transfected lysate.