



[Go to Product page](#)

Datasheet for ABIN949670

anti-HKDC1 antibody (AA 1-427)

1 Image

Overview

Quantity:	50 µg
Target:	HKDC1
Binding Specificity:	AA 1-427
Reactivity:	Human
Host:	Mouse
Clonality:	Polyclonal
Conjugate:	This HKDC1 antibody is un-conjugated
Application:	Western Blotting (WB)

Product Details

Purpose:	Mouse polyclonal antibody raised against a full-length human HKDC1 protein.
Immunogen:	HKDC1 (AAH21278.1, 1 a.a. ~ 427 a.a) full-length human protein.
Sequence:	MRAELEYGLK KKSHGLATVR MLPTYVCGLP DGTEKGKFLA LDGGTNFRV LLVKIRSGRR SVRMYNKIFA IPLEIMQGTG EELFDHIVQC IADFLDYMGL KGASLPLGFT FSFPCRQMSI DKGTLIGWTK GFKATDCEGE DVVDMLREAI KRRNEFDLDI VAVVNDTVGT MMTTCGYEDPN CEIGLIAGTG SNMCYMEDMR NIEMVEGGEG KMCINTEWGG FGDNGCIDDI RTRYDTEVDE GSLNPGKQRY EKMTSGMYLG EIVRQILIDL TKQGLLFRGQ ISERLRTRGI FETKFLSQIE SDRLALLQVR RILQQLGLDS TCEDSIVVKE VCGAVSRRAA QLCGAGLAAI VEKRREDQGL EHLRITVGVD GTLYKLPHPF SRILQETVKE LAPRCDVTFM LSEDGSGKGA ALITAVAKRL QQAQKEN
Cross-Reactivity:	Human

Product Details

Characteristics: Antibody reactive against mammalian transfected lysate.

Target Details

Target: HKDC1

Alternative Name: HKDC1 ([HKDC1 Products](#))

Background: Full Gene Name: hexokinase domain containing 1
Synonyms: FLJ22761,FLJ37767,MGC125688

Gene ID: 80201

Application Details

Application Notes: Optimal working dilution should be determined by the investigator.

Restrictions: For Research Use only

Handling

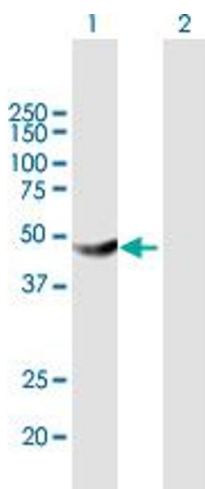
Buffer: In 1x PBS, pH 7.4

Handling Advice: Aliquot to avoid repeated freezing and thawing.

Storage: -20 °C

Storage Comment: Store at -20°C or lower. Aliquot to avoid repeated freezing and thawing.

Images



Western Blotting

Image 1. Western Blot analysis of HKDC1 expression in transfected 293T cell line by HKDC1 MaxPab polyclonal antibody.

Lane 1: HKDC1 transfected lysate(47.50 KDa).

Lane 2: Non-transfected lysate.