



Datasheet for ABIN949690
anti-COL21A1 antibody (AA 221-320)



[Go to Product page](#)

1 Image

Overview

Quantity:	100 µg
Target:	COL21A1
Binding Specificity:	AA 221-320
Reactivity:	Human
Host:	Mouse
Clonality:	Monoclonal
Conjugate:	This COL21A1 antibody is un-conjugated
Application:	Western Blotting (WB), ELISA

Product Details

Purpose:	Mouse monoclonal antibody raised against a partial recombinant COL21A1.
Immunogen:	COL21A1 (NP_110447, 221 a.a. ~ 320 a.a) partial recombinant protein with GST tag. MW of the GST tag alone is 26 KDa.
Sequence:	IPVAARDERGF DILLGLDVN KKVKKRIQLS PPKIKGYEVT SKVDLSELTS NVFPEGLPPS YVFVSTQRFK VKKIWDLWRI LTIDGRPQIA VTLNGVDKIL
Clone:	1G6
Isotype:	IgG2a
Cross-Reactivity:	Human
Characteristics:	Antibody Reactive Against Recombinant Protein.

Target Details

Target:	COL21A1
Alternative Name:	COL21A1 (COL21A1 Products)
Background:	Full Gene Name: collagen, type XXI, alpha 1 Synonyms: COLA1L,DKFZp564B052,FLJ39125,FLJ44623,FP633,MGC26619,dJ682J15.1,dJ708F5.1
Gene ID:	81578
NCBI Accession:	NM_030820

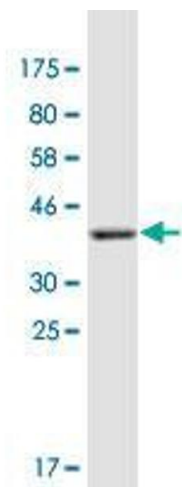
Application Details

Application Notes:	Optimal working dilution should be determined by the investigator.
Restrictions:	For Research Use only

Handling

Buffer:	In 1x PBS, pH 7.4
Handling Advice:	Aliquot to avoid repeated freezing and thawing.
Storage:	-20 °C
Storage Comment:	Store at -20°C or lower. Aliquot to avoid repeated freezing and thawing.

Images



Western Blotting

Image 1. Western Blot detection against Immunogen (36.74 kDa).