



[Go to Product page](#)

Datasheet for ABIN949724

## anti-ZCCHC9 antibody (AA 1-271)

### 3 Images

#### Overview

Quantity:	50 µg
Target:	ZCCHC9
Binding Specificity:	AA 1-271
Reactivity:	Human
Host:	Mouse
Clonality:	Polyclonal
Conjugate:	This ZCCHC9 antibody is un-conjugated
Application:	Western Blotting (WB), Immunofluorescence (IF)

#### Product Details

Purpose:	Mouse polyclonal antibody raised against a full-length human ZCCHC9 protein.
Immunogen:	ZCCHC9 (NP_115656.1, 1 a.a. ~ 271 a.a) full-length human protein.
Sequence:	MTRWARVSTT YNKRPLPATS WEDMKKGSFE GTSQNLPKRK QLEANRLSLK NDAPQAKHKK NKKKKEYLNE DVNGFMEYLR QNSQMVHNGQ IIATDSEEVR EEIAVALKKD SRREGRLKR QAAKKNAMVC FHCRKPGHGI ADCPAALenQ DMGTGICYRC GSTEHEITKC KAKVDPALGE FPFAKCFVCG EMGHLSRSCP DNPkGLYADG GGCKLCGSVE HlKKDCPESQ NSERMVTVGR WAKGMSADYE EILDVpKpQK PKTKIPKVVN F
Cross-Reactivity:	Human
Characteristics:	Antibody reactive against mammalian transfected lysate.

## Target Details

Target:	ZCCHC9
Alternative Name:	ZCCHC9 ( <a href="#">ZCCHC9 Products</a> )
Background:	Full Gene Name: zinc finger, CCHC domain containing 9 Synonyms: DKFZp761J139
Gene ID:	84240
NCBI Accession:	<a href="#">NM_032280</a>

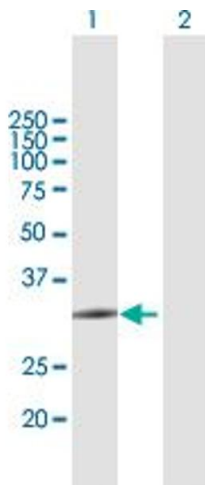
## Application Details

Application Notes:	Optimal working dilution should be determined by the investigator.
Restrictions:	For Research Use only

## Handling

Buffer:	In 1x PBS, pH 7.4
Handling Advice:	Aliquot to avoid repeated freezing and thawing.
Storage:	-20 °C
Storage Comment:	Store at -20°C or lower. Aliquot to avoid repeated freezing and thawing.

## Images

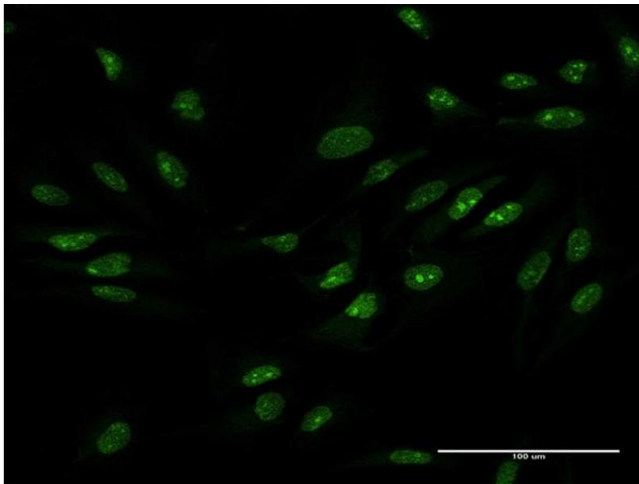


### Western Blotting

**Image 1.** Western Blot analysis of ZCCHC9 expression in transfected 293T cell line by ZCCHC9 MaxPab polyclonal antibody.

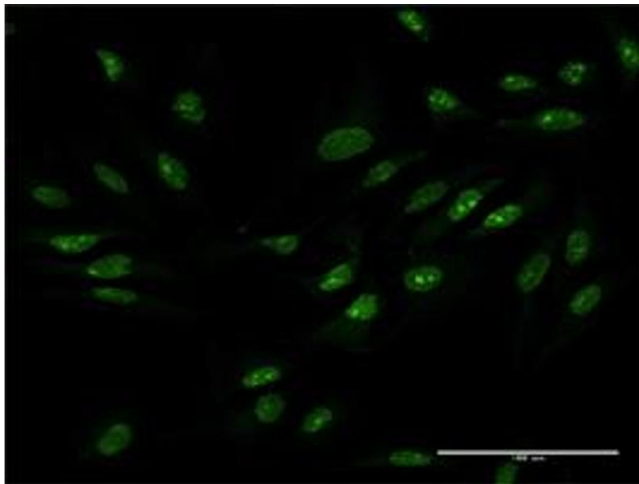
Lane 1: ZCCHC9 transfected lysate(29.81 kDa).

Lane 2: Non-transfected lysate.



#### Immunofluorescence

**Image 2.** Immunofluorescence of purified MaxPab antibody to ZCCHC9 on HeLa cell. [antibody concentration 10  $\mu$ g/ml]



#### Immunofluorescence

**Image 3.** Immunofluorescence of purified MaxPab antibody to ZCCHC9 on HeLa cell. (antibody concentration 10  $\mu$ g/mL)