



[Go to Product page](#)

Datasheet for ABIN949753

anti-RHPN2 antibody (AA 1-686)

1 Image

Overview

Quantity:	50 µg
Target:	RHPN2
Binding Specificity:	AA 1-686
Reactivity:	Human
Host:	Mouse
Clonality:	Polyclonal
Conjugate:	This RHPN2 antibody is un-conjugated
Application:	Western Blotting (WB)

Product Details

Purpose:	Mouse polyclonal antibody raised against a full-length human RHPN2 protein.
Immunogen:	RHPN2 (NP_149094.2, 1 a.a. ~ 686 a.a) full-length human protein.
Sequence:	MTDALLPAAP QPLEKNDGY FRKGCNPLAQ TGRSKLQNQR AALNQILKA VRMRTGAENL LKVATNSKVR EQVRELSFV NSDLQMLKEE LEGLNISGVV YQNTEEAFTI PLIPLGLKET KDVDFAVVLK DFILEHYSED GYLYEDEIAD LMDLRQACRT PSRDEAGVEL LMTYFIQLGF VESRFFPPTTR QMGLLFTWYD SLTGVPVSQQ NLLLEKASVL FNTGALYTQI GTRCDRQTQA GLESIDAFAQ RAAGVLNLYK DTFTHTPSYD MSPAMLSVLV KMMLAQEQES VFEKISLPGI RNEFFMLVKV AQEAAKVGEV YQQLHAAMSQ APVKENIPYS WASLACVKAH HYAALAHYFT AILLIDHQVK PGTDLDHQEK CLSQLYDHMP EGLTPLATLK NDQQRRLGK SHLRRAMAHH EESVREASLC KKLRSIEVLQ KVLCAAQERS RLTYAQHQEE DLLNLIDAP SVVAKTEQEV DIILPQFSKL TVTDFQKLG PLSVFSANKR WTPPRSIRFT AEEGDLGFTL RGNAPVQVHF LDPYCSASVA GAREGDYIVS IQLVDCKWLT LSEVMKLLKS FGEDEIEMKV VSLLDSTSSM

Product Details

HNKSATYSVG MQKTYSMICL AIDDDDKTDK TTKISKKLSF LSWGTKNKRQ KSASTLCLPS
VGAARPQVKK KLPSPFLLN SDSSWY

Cross-Reactivity: Human

Characteristics: Antibody reactive against mammalian transfected lysate.

Target Details

Target: RHPN2

Alternative Name: RHPN2 ([RHPN2 Products](#))

Background: Full Gene Name: rhophilin, Rho GTPase binding protein 2

Synonyms: RhoBP,p76RBE

Gene ID: 85415

NCBI Accession: [NM_033103](#)

Application Details

Application Notes: Optimal working dilution should be determined by the investigator.

Restrictions: For Research Use only

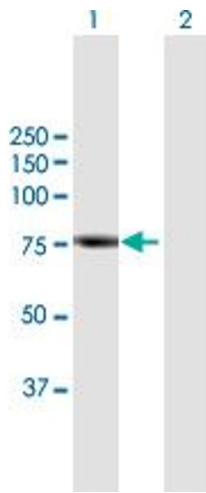
Handling

Buffer: In 1x PBS, pH 7.4

Handling Advice: Aliquot to avoid repeated freezing and thawing.

Storage: -20 °C

Storage Comment: Store at -20°C or lower. Aliquot to avoid repeated freezing and thawing.



Western Blotting

Image 1. Western Blot analysis of RHPN2 expression in transfected 293T cell line by RHPN2 MaxPab polyclonal antibody.

Lane 1: RHPN2 transfected lysate(75.46 KDa).

Lane 2: Non-transfected lysate.