

Datasheet for ABIN949763
anti-LRSAM1 antibody (AA 1-723)



[Go to Product page](#)

4 Images

Overview

Quantity:	100 µL
Target:	LRSAM1
Binding Specificity:	AA 1-723
Reactivity:	Human
Host:	Rabbit
Clonality:	Polyclonal
Conjugate:	This LRSAM1 antibody is un-conjugated
Application:	Western Blotting (WB), Immunoprecipitation (IP)

Product Details

Purpose:	Rabbit polyclonal antibody raised against a full-length human LRSAM1 protein.
Immunogen:	LRSAM1 (NP_001005373.1, 1 a.a. ~ 723 a.a) full-length human protein.
Sequence:	MPLFFRKRKP SEEARKLEY QMCLAKEAGA DDILDISKCE LSEIPFGAFA TCKVLQKKVL IVHTNHLTSL LPKSCSLLSL ATIKVLDLHD NQLTALPDDL GQLTALQVLN VERNQLMQLP RSIGNLTQLQ TLNVKDNKLNK ELPDTVGELE SLRTLNIISGN EIQRLPQMLA HVRTLMLSL DASAMVYPPR EVCGAGTAAI LQFLCKESGL EYPPSQYLL PILEQDGIEN SRDSPDGPTD RFSREELEWQ NRFSDYEKRE EQKMLEKLEF ERRLELGQRE HTQLLQSSS QKDEILQTVK EEQRLEQGL SEHQRHNAE RQRLQEQLKQ TEQNISSRIQ KLLQDNQRQK KSSEILKSLE NERIRMEQLM SITQEETESL RRRDVASAMQ QMLTESCKNR LIQMAYESQR QNLVQQACSS MAEMDERFQQ ILSWQQMDQN KAISQILQES AMQKAAFEAL QVKKDLMHRQ IRSQIKLIET ELLQLTQLEL KRKSLDTESE QEMISEQRWA LSSLLQQLL EKQQREEELR EILTELEAKS ETRQENYWLI QYQRLLNQKP LSLKLQEEGM ERQLVALLEE LSAEHYLPIF AHHRLSLDLL

Product Details

SQMSPGDLAK VGVSEAGLQH EILRRVQELL DAARIQPELK PPMGEVVTPT APQEPPESVR
PSAPPAAELEV QASECVVCLE REAQMIFLNC GHVCCCQCC QPLRTCPLCR QDIAQRLRIY HSS

Cross-Reactivity: Human

Characteristics: Antibody reactive against mammalian transfected lysate.

Target Details

Target: LRSAM1

Alternative Name: LRSAM1 ([LRSAM1 Products](#))

Background: Full Gene Name: leucine rich repeat and sterile alpha motif containing 1
Synonyms: FLJ31641,RIFLE,TAL

Gene ID: 90678

NCBI Accession: [NM_001005373](#)

Application Details

Application Notes: Optimal working dilution should be determined by the investigator.

Restrictions: For Research Use only

Handling

Format: Liquid

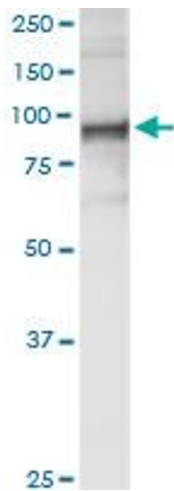
Buffer: No additive

Preservative: Without preservative

Handling Advice: Aliquot to avoid repeated freezing and thawing.

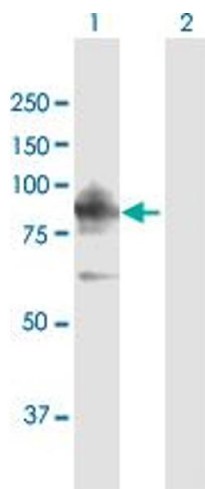
Storage: -20 °C

Storage Comment: Store at -20°C or lower. Aliquot to avoid repeated freezing and thawing.



Immunoprecipitation

Image 1. Immunoprecipitation of LRSAM1 transfected lysate using anti-LRSAM1 MaxPab rabbit polyclonal antibody and Protein A Magnetic Bead, and immunoblotted with LRSAM1 purified MaxPab mouse polyclonal antibody (B01P).



Western Blotting

Image 2. Western Blot analysis of LRSAM1 expression in transfected 293T cell line by LRSAM1 MaxPab polyclonal antibody.

Lane 1: LRSAM1 transfected lysate(83.60 kDa).

Lane 2: Non-transfected lysate.



Western Blotting

Image 3. LRSAM1 MaxPab rabbit polyclonal antibody. Western Blot analysis of LRSAM1 expression in human liver.

Please check the [product details page](#) for more images. Overall 4 images are available for ABIN949763.