

Datasheet for ABIN949766
anti-KIFC2 antibody (AA 1-226)



[Go to Product page](#)

1 Image

Overview

| | |
|----------------------|--------------------------------------|
| Quantity: | 50 µg |
| Target: | KIFC2 |
| Binding Specificity: | AA 1-226 |
| Reactivity: | Human |
| Host: | Mouse |
| Clonality: | Polyclonal |
| Conjugate: | This KIFC2 antibody is un-conjugated |
| Application: | Western Blotting (WB) |

Product Details

| | |
|-------------------|--|
| Purpose: | Mouse polyclonal antibody raised against a full-length human KIFC2 protein. |
| Immunogen: | KIFC2 (AAH15171.1, 1 a.a. ~ 226 a.a) full-length human protein. |
| Sequence: | MSGSLAPLGT LHLVDLAGSE RARKAGAAGP PRGDPDGARR LREAQTINRS LLALGGVMAA LRAHRPHVPF RDSQLTRLLQ PALGPGTTAV LLLQVGAGAG QVCACRSPT RARPPAPLAR RSPRGRRISG RQSAPSSSPT EWVKWSWGQP GAAGSRAPPG RLLPSAPTLR SPGPPAPLRR PLAVLHAPVP TTARARLSRP QRACSSSPGS RPCPWGLRPG LCWQRR |
| Cross-Reactivity: | Human |
| Characteristics: | Antibody reactive against mammalian transfected lysate. |

Target Details

| | |
|---------|-------|
| Target: | KIFC2 |
|---------|-------|

Target Details

| | |
|-------------------|---|
| Alternative Name: | KIFC2 (KIFC2 Products) |
| Background: | Full Gene Name: kinesin family member C2 Synonyms: |
| Gene ID: | 90990 |

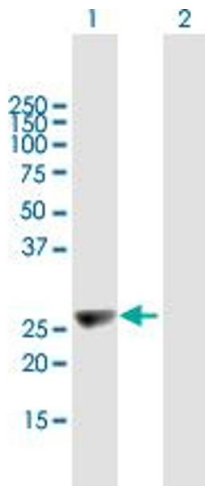
Application Details

| | |
|--------------------|--|
| Application Notes: | Optimal working dilution should be determined by the investigator. |
| Restrictions: | For Research Use only |

Handling

| | |
|------------------|--|
| Buffer: | In 1x PBS, pH 7.4 |
| Handling Advice: | Aliquot to avoid repeated freezing and thawing. |
| Storage: | -20 °C |
| Storage Comment: | Store at -20°C or lower. Aliquot to avoid repeated freezing and thawing. |

Images



Western Blotting

Image 1. Western Blot analysis of KIFC2 expression in transfected 293T cell line by KIFC2 MaxPab polyclonal antibody.

Lane 1: KIFC2 transfected lysate(24.86 KDa).

Lane 2: Non-transfected lysate.