



[Go to Product page](#)

Datasheet for ABIN949773  
**anti-LONRF1 antibody (AA 1-110)**

2 Images

Overview

Quantity:	200 µL
Target:	LONRF1
Binding Specificity:	AA 1-110
Reactivity:	Human
Host:	Mouse
Clonality:	Monoclonal
Conjugate:	This LONRF1 antibody is un-conjugated
Application:	ELISA, Western Blotting (WB)

Product Details

Purpose:	Mouse monoclonal antibody raised against a partial recombinant LONRF1.
Immunogen:	LONRF1 (NP_689484, 1 a.a. ~ 110 a.a) partial recombinant protein with GST tag. MW of the GST tag alone is 26 KDa.
Sequence:	MEESQSLNEP SPKQSEEIPE VTSEPVKGS L NRAQSAQSIN STEMPAREDC LKRVSSEPV L SVQKEGVLLK RKLSLLEQDV IVNEDGRNKL KKQGETPNEV CMFSLAYGDI
Clone:	3F2
Isotype:	IgA kappa
Cross-Reactivity:	Human

## Target Details

Target:	LONRF1
Alternative Name:	LONRF1 ( <a href="#">LONRF1 Products</a> )
Background:	Full Gene Name: LON peptidase N-terminal domain and ring finger 1 Synonyms: FLJ23749,RNF191
Gene ID:	91694
NCBI Accession:	<a href="#">NP_689484</a> , <a href="#">NM_152271</a>

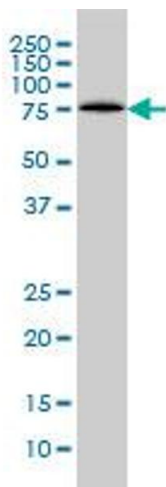
## Application Details

Application Notes:	Optimal working dilution should be determined by the investigator.
Comment:	Product Quality tested by: Antibody Reactive Against Recombinant Protein.
Restrictions:	For Research Use only

## Handling

Format:	Liquid
Buffer:	In ascites fluid
Handling Advice:	Aliquot to avoid repeated freezing and thawing.
Storage:	-20 °C
Storage Comment:	Store at -20°C or lower. Aliquot to avoid repeated freezing and thawing.

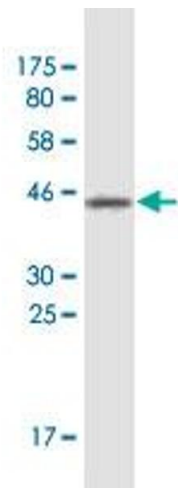
## Images



### Western Blotting

**Image 1.** FLJ23749 monoclonal antibody (M01A), clone 3F2

Western Blot analysis of LONRF1 expression in HeLa .



### Western Blotting

**Image 2.** Western Blot detection against Immunogen (37.84 kDa).