



[Go to Product page](#)

Datasheet for ABIN949780

## anti-MRPS36 antibody (AA 1-103)

### 2 Images

#### Overview

Quantity:	100 µg
Target:	MRPS36
Binding Specificity:	AA 1-103
Reactivity:	Human
Host:	Mouse
Clonality:	Monoclonal
Conjugate:	This MRPS36 antibody is un-conjugated
Application:	ELISA, Western Blotting (WB)

#### Product Details

Purpose:	Mouse monoclonal antibody raised against a full-length recombinant MRPS36.
Immunogen:	MRPS36 (NP_150597.1, 1 a.a. ~ 103 a.a) full-length recombinant protein with GST tag. MW of the GST tag alone is 26 KDa.
Sequence:	MMGSKMASAS RVVQVVKPHT PLIRFPDRRD NPKPNVSEAL RSAGLPSHSS VISQHSKGSK SPDLLMYQGP PDTAIEIKTL PQKYRRKLVS QEEMEFIQRG GPE
Clone:	3E11
Isotype:	IgG2a
Cross-Reactivity:	Human
Characteristics:	Antibody Reactive Against Recombinant Protein.

## Target Details

Target:	MRPS36
Alternative Name:	MRPS36 ( <a href="#">MRPS36 Products</a> )
Background:	Full Gene Name: mitochondrial ribosomal protein S36 Synonyms: DC47,MGC22896,MRP-S36
Gene ID:	92259
NCBI Accession:	<a href="#">NM_033281</a>

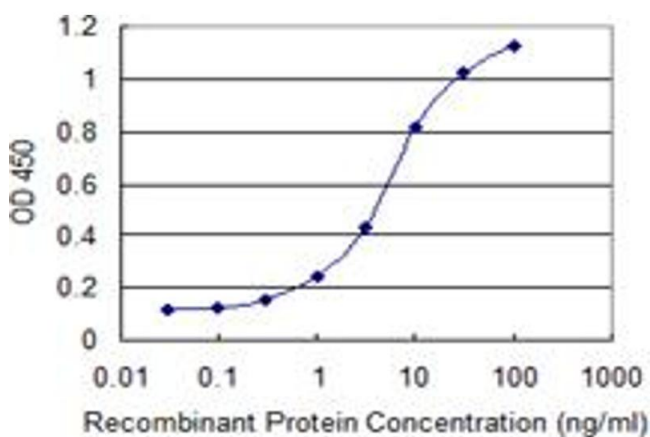
## Application Details

Application Notes:	Optimal working dilution should be determined by the investigator.
Restrictions:	For Research Use only

## Handling

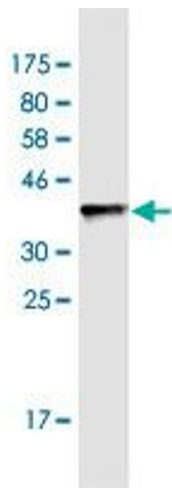
Buffer:	In 1x PBS, pH 7.4
Handling Advice:	Aliquot to avoid repeated freezing and thawing.
Storage:	-20 °C
Storage Comment:	Store at -20°C or lower. Aliquot to avoid repeated freezing and thawing.

## Images



### ELISA

**Image 1.** Detection limit for recombinant GST tagged MRPS36 is 0.1 ng/ml as a capture antibody.



### Western Blotting

**Image 2.** Western Blot detection against Immunogen (37.9 kDa).