



Datasheet for ABIN949784
anti-MARS2 antibody (AA 1-593)



[Go to Product page](#)

1 Image

Overview

Quantity:	50 µg
Target:	MARS2
Binding Specificity:	AA 1-593
Reactivity:	Human
Host:	Mouse
Clonality:	Polyclonal
Conjugate:	This MARS2 antibody is un-conjugated
Application:	Western Blotting (WB)

Product Details

Purpose:	Mouse polyclonal antibody raised against a full-length human MARS2 protein.
Immunogen:	MARS2 (NP_612404.1, 1 a.a. ~ 593 a.a) full-length human protein.
Sequence:	MLRTSVLRLL GRTGASRLSL LEDFGPRYYSGSLSAGDDA CDVRAYFTTP IFYVNAAPHI GHLYSALLAD ALCRHRRLRG PSTAATRFST GTDEHGLKIQ QAAATAGLAP TELCDRVSEQ FQQLQEAGI SCTDFIRTTE ARHRVAVQHF WGVLSRGLL YKGVYEGWYC ASDECFLPEA KVTQQPGPSG DSFPVSLESG HPVSWTKEEN YIFRLSQFRK PLQRWLRGNP QAITPEPFHH VVLQWLDEEL PDLVSRRSS HLHWGIPVPG DDSQTIYVWL DALVNYLTVI GYPNAEFKSW WPATSHIIGK DILKFHAIYW PAFLLGAGMS PPQRICVHSH WTVCGQKMSK SLGNVVDPR CLNRYTVDGF RYFLLRQGVN NWDCDYDEK VVKLLNSELA DALGGLLNRC TAKRINPSET YPAFCTTCFP SEPGLVGPVS RAQAEDYALV SAVATLPKQV ADHYDNFRIY KALEAVSSCV RQTNGFVQRH APWKLNWESP VDAPWLGTVL HVALECLRVF GTLLQPVTTPS LADKLLSRLG VSASERSLGE LYFLPRFYGH PCPFEGRRLG PETGLLFPRL DQSRTWLKVA HRT

Product Details

Cross-Reactivity:	Human
Characteristics:	Antibody reactive against mammalian transfected lysate.

Target Details

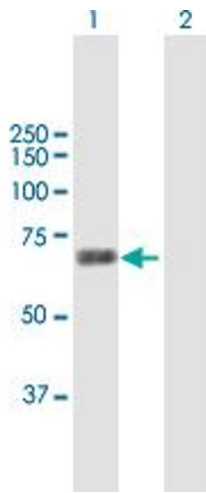
Target:	MARS2
Alternative Name:	MARS2 (MARS2 Products)
Background:	Full Gene Name: methionyl-tRNA synthetase 2, mitochondrial Synonyms: MetRS,mtMetRS
Gene ID:	92935
NCBI Accession:	NM_138395

Application Details

Application Notes:	Optimal working dilution should be determined by the investigator.
Restrictions:	For Research Use only

Handling

Buffer:	In 1x PBS, pH 7.4
Handling Advice:	Aliquot to avoid repeated freezing and thawing.
Storage:	-20 °C
Storage Comment:	Store at -20°C or lower. Aliquot to avoid repeated freezing and thawing.



Western Blotting

Image 1. Western Blot analysis of MARS2 expression in transfected 293T cell line by MARS2 MaxPab polyclonal antibody.

Lane1:MARS2 transfected lysate(65.23 KDa).

Lane2:Non-transfected lysate.