



Datasheet for ABIN949797
anti-DTX2 antibody (AA 1-622)



[Go to Product page](#)

3 Images

Overview

Quantity:	100 µg
Target:	DTX2
Binding Specificity:	AA 1-622
Reactivity:	Human
Host:	Rabbit
Clonality:	Polyclonal
Conjugate:	This DTX2 antibody is un-conjugated
Application:	Western Blotting (WB)

Product Details

Purpose:	Rabbit polyclonal antibody raised against a full-length human DTX2 protein.
Immunogen:	DTX2 (NP_065943.1, 1 a.a. ~ 622 a.a) full-length human protein.
Sequence:	MAMAPSPSLV QVYTSPAAVA VWEWQDGLGT WHPYSATVCS FIEQQFVQQK GQRFGLGSLA HSIPLGQADP SLAPYIIDLP SWTQFRQDTG TMRAVRRHLF PQHSAPGRGV VWEWLSDDGS WTAYEASVCD YLEQQVARGN QLVDLAPLGY NYTVNYTTHT QTNKTSSFCR SVRRQAGPPY PVTTIIAPPG HTGVACSCHQ CLSGSRTGPV SGRYRHSMTN LPAYPVPQHP PHRTASVFGT HQAFAPYNKP SLSGARSAPR LNTTNAWGAA PPSLGSQPLY RSSLSHLGPQ HLPPGSSTSG AVSASLPSGP SSSPGSVPAT VPMQMPKPSR VQQALAGMTS VLMSAIGLPV CLSRAPQPTS PPASRLASKS HGSVKRLRKM SVKGATPKPE PEPEQVIKNY TEELKVPPDE DCIICMEKLS AASGYSDVTD SKAIGSLAVG HLTCKSHAFH LLCLLAMYN CNKDGSLQCP SCKTIYGEKT GTQPQGKMEV LRFQMSLPGH EDCGTILIVY SIPHGIQGPE HPNPGKPFTA RGFPRQCYLP DNAQGRKMLE LLKVAWKRRLL IFTVGTSSTT GETDVTVVWNE IHHKTEMDRN ITGHGYPPDN

Product Details

YLQNVLAELA AQGVTEDCLE QQ

Cross-Reactivity: Human, Mouse

Characteristics: Antibody reactive against mammalian transfected lysate.

Target Details

Target: DTX2

Alternative Name: DTX2 ([DTX2 Products](#))

Background: Full Gene Name: deltex homolog 2 (Drosophila)
Synonyms: KIAA1528,MGC71098,RNF58

Gene ID: 113878

NCBI Accession: [NM_020892](#)

Pathways: [Notch Signaling](#)

Application Details

Application Notes: Optimal working dilution should be determined by the investigator.

Restrictions: For Research Use only

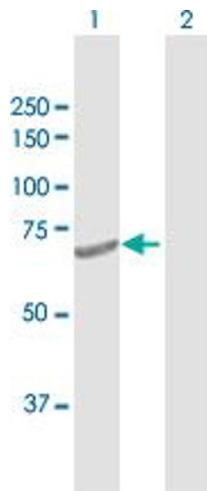
Handling

Buffer: In 1x PBS, pH 7.4

Handling Advice: Aliquot to avoid repeated freezing and thawing.

Storage: -20 °C

Storage Comment: Store at -20°C or lower. Aliquot to avoid repeated freezing and thawing.

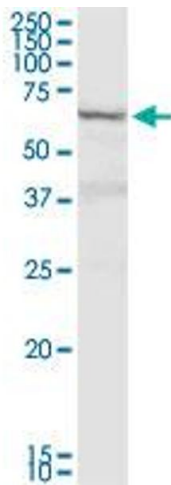


Western Blotting

Image 1. Western Blot analysis of DTX2 expression in transfected 293T cell line by DTX2 MaxPab polyclonal antibody.

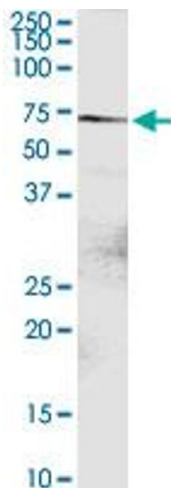
Lane 1: DTX2 transfected lysate(67.20 KDa).

Lane 2: Non-transfected lysate.



Western Blotting

Image 2. DTX2 MaxPab rabbit polyclonal antibody. Western Blot analysis of DTX2 expression in human stomach.



Western Blotting

Image 3. DTX2 MaxPab rabbit polyclonal antibody. Western Blot analysis of DTX2 expression in mouse brain.