



[Go to Product page](#)

Datasheet for ABIN949817
anti-OLIG1 antibody (AA 1-255)

4 Images

Overview

Quantity:	100 µg
Target:	OLIG1
Binding Specificity:	AA 1-255
Reactivity:	Human
Host:	Rabbit
Clonality:	Polyclonal
Conjugate:	This OLIG1 antibody is un-conjugated
Application:	Western Blotting (WB)

Product Details

Purpose:	Rabbit polyclonal antibody raised against a full-length human OLIG1 protein.
Immunogen:	OLIG1 (NP_620450.1, 1 a.a. ~ 255 a.a) full-length human protein.
Sequence:	MLRPQRPGDL QLGASLYELV GYRQPPSSSS SSTSSTSSTS SSSTTAPLLP KAAREKPEAP AEPPGPGPGS GAHPGGSARP DAKEEQQQQL RRKINSRERK RMQDLNLAMD ALREVILPYS AAHCQGAPGR KLSKIATLLL ARNYILLGGS SLQELRRALG EGAGPAAPRL LLAGLPLLAA APGSVLLAPG AVGPPDALRP AKYLSLALDE PPCGQFALPG GGAGGPGLCT CAVCKFPHLV PASLGAAVQ AQFSK
Cross-Reactivity:	Human, Mouse, Rat
Characteristics:	Antibody reactive against mammalian transfected lysate.

Target Details

Target:	OLIG1
Alternative Name:	OLIG1 (OLIG1 Products)
Background:	Full Gene Name: oligodendrocyte transcription factor 1 Synonyms: BHLHB6,bHLHe21
Gene ID:	116448
NCBI Accession:	NM_138983

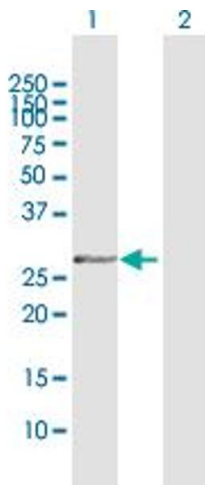
Application Details

Application Notes:	Optimal working dilution should be determined by the investigator.
Restrictions:	For Research Use only

Handling

Buffer:	In 1x PBS, pH 7.4
Handling Advice:	Aliquot to avoid repeated freezing and thawing.
Storage:	-20 °C
Storage Comment:	Store at -20°C or lower. Aliquot to avoid repeated freezing and thawing.

Images

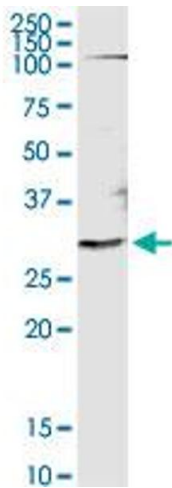


Western Blotting

Image 1. Western Blot analysis of OLIG1 expression in transfected 293T cell line by OLIG1 MaxPab polyclonal antibody.

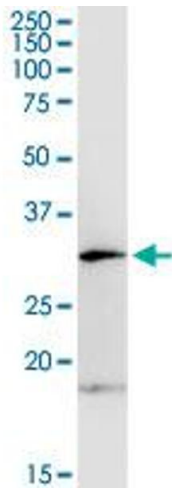
Lane 1: OLIG1 transfected lysate(26.20 KDa).

Lane 2: Non-transfected lysate.



Western Blotting

Image 2. OLIG1 MaxPab rabbit polyclonal antibody.
Western Blot analysis of OLIG1 expression in rat brain.



Western Blotting

Image 3. OLIG1 MaxPab rabbit polyclonal antibody.
Western Blot analysis of OLIG1 expression in mouse spleen.

Please check the [product details page](#) for more images. Overall 4 images are available for ABIN949817.