



[Go to Product page](#)

Datasheet for ABIN949825

## anti-ZG16B antibody (AA 1-172)

### 1 Image

#### Overview

Quantity:	50 µg
Target:	ZG16B
Binding Specificity:	AA 1-172
Reactivity:	Human
Host:	Mouse
Clonality:	Polyclonal
Conjugate:	This ZG16B antibody is un-conjugated
Application:	Western Blotting (WB)

#### Product Details

Purpose:	Mouse polyclonal antibody raised against a full-length human LOC124220 protein.
Immunogen:	LOC124220 (ENSP00000371715, 1 a.a. ~ 172 a.a) full-length human protein.
Sequence:	MLLLTLALL GGPTWAGKMY GPGGGKYFST TEDYDHEITG LRVSVGLLLV KSVQVKLGDS WDVKLGALGG NTQEVTLQPG EYITKVFVAF QAFLRGMVMY TSKDRYFYFG KLDGQISSAY PSQEQVLVG IYGQYQLLGI KSIGFEWNYP LEEPTTEPPV NLTYSANSPV GR
Cross-Reactivity:	Human
Characteristics:	Antibody reactive against mammalian transfected lysate.

#### Target Details

Target:	ZG16B
---------	-------

## Target Details

Abstract:	<a href="#">ZG16B Products</a>
Background:	Full Gene Name: similar to common salivary protein 1 Synonyms: HRPE773,PRO1567
Gene ID:	124220

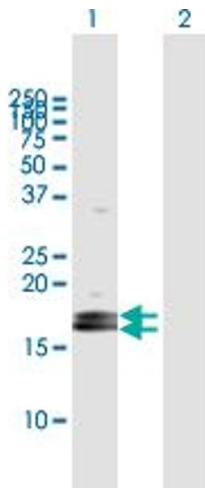
## Application Details

Application Notes:	Optimal working dilution should be determined by the investigator.
Restrictions:	For Research Use only

## Handling

Buffer:	In 1x PBS, pH 7.4
Handling Advice:	Aliquot to avoid repeated freezing and thawing.
Storage:	-20 °C
Storage Comment:	Store at -20°C or lower. Aliquot to avoid repeated freezing and thawing.

## Images



### Western Blotting

**Image 1.** Western Blot analysis of LOC124220 expression in transfected 293T cell line by LOC124220 MaxPab polyclonal antibody.

Lane 1: LOC124220 transfected lysate(18.92 KDa).

Lane 2: Non-transfected lysate.