

Datasheet for ABIN949828  
**anti-ZSWIM7 antibody (AA 1-140)**[Go to Product page](#)

## 1 Image

## Overview

Quantity:	50 µg
Target:	ZSWIM7
Binding Specificity:	AA 1-140
Reactivity:	Human
Host:	Mouse
Clonality:	Polyclonal
Conjugate:	This ZSWIM7 antibody is un-conjugated
Application:	Western Blotting (WB)

## Product Details

Purpose:	Mouse polyclonal antibody raised against a full-length human ZSWIM7 protein.
Immunogen:	ZSWIM7 (AAI53133.1, 1 a.a. ~ 140 a.a) full-length human protein.
Sequence:	MAVVLPAVVE ELLSEMAAAV QESARIPDEY LLSLKFLFGS SATQALDLVD RQSITLISSP SGRRVYQVLG SSSKTYTCLA SCHYCSCPAF AFSVLRKSDS ILCKHLLAVY LSQVMRTCQQ LSVSDKQLTD ILLMEKKQEA
Cross-Reactivity:	Human
Characteristics:	Antibody reactive against mammalian transfected lysate.

## Target Details

Target:	ZSWIM7
---------	--------

Target Details

Alternative Name:	ZSWIM7 ( <a href="#">ZSWIM7 Products</a> )
Background:	Full Gene Name: zinc finger, SWIM-type containing 7 Synonyms: SWS1
Gene ID:	125150

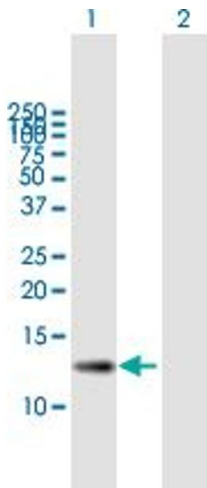
Application Details

Application Notes:	Optimal working dilution should be determined by the investigator.
Restrictions:	For Research Use only

Handling

Buffer:	In 1x PBS, pH 7.4
Handling Advice:	Aliquot to avoid repeated freezing and thawing.
Storage:	-20 °C
Storage Comment:	Store at -20°C or lower. Aliquot to avoid repeated freezing and thawing.

Images



**Western Blotting**

**Image 1.** Western Blot analysis of ZSWIM7 expression in transfected 293T cell line by ZSWIM7 MaxPab polyclonal antibody.

Lane 1: ZSWIM7 transfected lysate(15.4 KDa).

Lane 2: Non-transfected lysate.