



[Go to Product page](#)

Datasheet for ABIN949832

## anti-HSPB6 antibody (AA 1-160)

### 4 Images

#### Overview

Quantity:	100 µg
Target:	HSPB6
Binding Specificity:	AA 1-160
Reactivity:	Human
Host:	Mouse
Clonality:	Monoclonal
Conjugate:	This HSPB6 antibody is un-conjugated
Application:	Western Blotting (WB), ELISA, Immunofluorescence (IF)

#### Product Details

Purpose:	Mouse monoclonal antibody raised against a full-length recombinant HSPB6.
Immunogen:	HSPB6 (AAH68046.1, 1 a.a. ~ 160 a.a) full-length recombinant protein with GST tag. MW of the GST tag alone is 26 KDa.
Sequence:	MEIPVPVQPS WLRRASAPLL GLSAPGRLFD QRFGEGLLEA ELAALCPTTL APYYLRAPSV ALPVAQVPTD PGHFSVLLDV KHFSPEEIAV KVVGEHVEVH ARHEERPDEH GFVAREFHRR YRLPPGVDPA AVTSALSPEG VLSIQAAPAS AQAPPPAAAK
Clone:	6A4
Isotype:	IgG2a
Cross-Reactivity:	Human
Characteristics:	Antibody Reactive Against Recombinant Protein.

## Target Details

Target:	HSPB6
Alternative Name:	HSPB6 ( <a href="#">HSPB6 Products</a> )
Background:	Full Gene Name: heat shock protein, alpha-crystallin-related, B6 Synonyms: FLJ32389,Hsp20
Gene ID:	126393

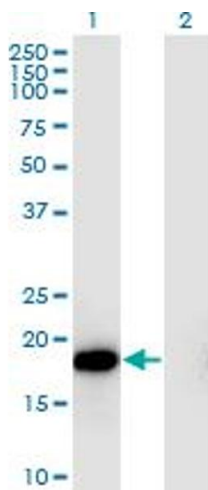
## Application Details

Application Notes:	Optimal working dilution should be determined by the investigator.
Restrictions:	For Research Use only

## Handling

Buffer:	In 1x PBS, pH 7.4
Handling Advice:	Aliquot to avoid repeated freezing and thawing.
Storage:	-20 °C
Storage Comment:	Store at -20°C or lower. Aliquot to avoid repeated freezing and thawing.

## Images

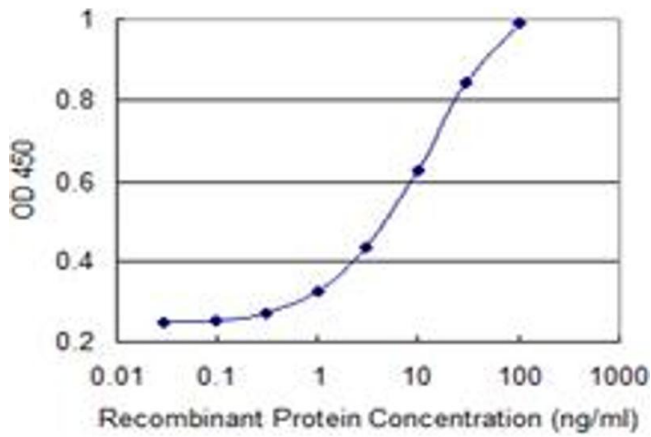


### Western Blotting

**Image 1.** Western Blot analysis of HSPB6 expression in transfected 293T cell line by HSPB6 monoclonal antibody (M03), clone 6A4.

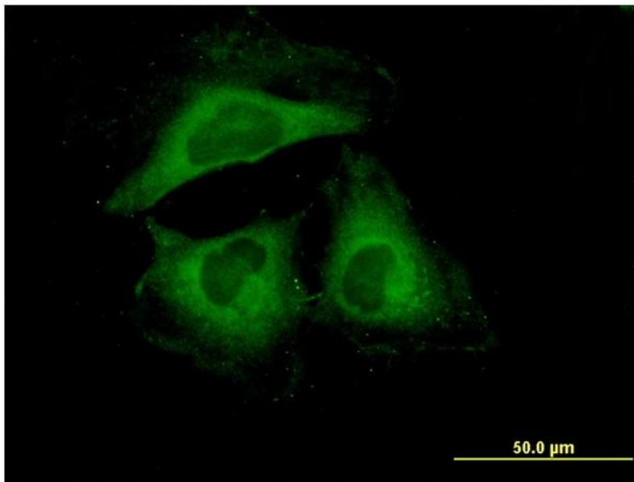
Lane 1: HSPB6 transfected lysate(17.2 KDa).

Lane 2: Non-transfected lysate.



### ELISA

**Image 2.** Detection limit for recombinant GST tagged HSPB6 is 0.3 ng/ml as a capture antibody.



### Immunofluorescence

**Image 3.** Immunofluorescence of monoclonal antibody to HSPB6 on HeLa cell. [antibody concentration 10 ug/ml]

Please check the [product details page](#) for more images. Overall 4 images are available for ABIN949832.