



Datasheet for ABIN949834
anti-CYP4F22 antibody (AA 1-531)



[Go to Product page](#)

1 Image

Overview

Quantity:	100 µg
Target:	CYP4F22
Binding Specificity:	AA 1-531
Reactivity:	Human
Host:	Rabbit
Clonality:	Polyclonal
Conjugate:	This CYP4F22 antibody is un-conjugated
Application:	Western Blotting (WB)

Product Details

Purpose:	Rabbit polyclonal antibody raised against a full-length human CYP4F22 protein.
Immunogen:	CYP4F22 (AAH69351.1, 1 a.a. ~ 531 a.a) full-length human protein.
Sequence:	MLPITDRLLH LLGLEKTAFR IYAVSTLLLF LLFFLFRLLL RFLRLCRSFY ITCRRLRCFP QPPRRNWLLG HLGMYLPNEA GLQDEKKVLD NMHHVLLVWM GPVLP LLVLV HPDYIKPLLG ASAAIAPKDD LFYGF LKPWL GDGLLSKGD KWSRHRRLT PAFHFDILKP YMKIFNQSAD IMHAKWRHLA EGSAVSLDMF EHISLMTLDS LQKCVFSYNS NCQEKMSDYI SAIIELSALS VRRQYRLHHY LDFIYRSAD GRRFRQACDM VHHFTTEVIQ ERRRALRQQG AEWL KAKQG KTLDFIDVLL LARDEDGKEL SDEDIRAEAD TFMFEGHDTT SSGISWMLFN LAKYPEYQEK CREEIQVMK GRELEELEWD DLTQLPFTTM CIKESLRQYP PVTLSRQCT EDIKLPDGRI IPKGIICLVS IYGTHHNPTV WPDSKVYNPY RFPDNPQQR SPLAYVPFSA GPRNCIGQSF AMAELRVVVA LTLRFRLSV DRTRKVRKPK ELILRTENGL WLKVEPLPPR A

Product Details

Cross-Reactivity:	Human
Characteristics:	Antibody reactive against mammalian transfected lysate.

Target Details

Target:	CYP4F22
Alternative Name:	CYP4F22 (CYP4F22 Products)
Background:	Full Gene Name: cytochrome P450, family 4, subfamily F, polypeptide 22 Synonyms: FLJ39501,LI3
Gene ID:	126410

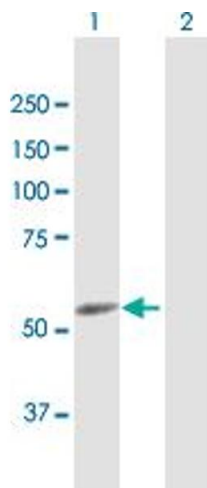
Application Details

Application Notes:	Optimal working dilution should be determined by the investigator.
Restrictions:	For Research Use only

Handling

Buffer:	In 1x PBS, pH 7.4
Handling Advice:	Aliquot to avoid repeated freezing and thawing.
Storage:	-20 °C
Storage Comment:	Store at -20°C or lower. Aliquot to avoid repeated freezing and thawing.

Images



Western Blotting

Image 1. Western Blot analysis of CYP4F22 expression in transfected 293T cell line by CYP4F22 MaxPab polyclonal antibody.

Lane 1: CYP4F22 transfected lysate(62.00 kDa).

Lane 2: Non-transfected lysate.