



[Go to Product page](#)

Datasheet for ABIN949841  
**anti-CCDC148 antibody (AA 1-255)**

2 Images

Overview

|                      |  |
|----------------------|--|
| Quantity:            | 50 µg                                  |
| Target:              | CCDC148                                |
| Binding Specificity: | AA 1-255                               |
| Reactivity:          | Human                                  |
| Host:                | Mouse                                  |
| Clonality:           | Polyclonal                             |
| Conjugate:           | This CCDC148 antibody is un-conjugated |
| Application:         | Western Blotting (WB)                  |

Product Details

|                   |  |
|-------------------|--|
| Purpose:          | Mouse polyclonal antibody raised against a full-length human CCDC148 protein.  |
| Immunogen:        | CCDC148 (AAH15395.1, 1 a.a. ~ 255 a.a) full-length human protein.  |
| Sequence:         | MCAASASPDN LVFHMKNEMR NIKYKPVYDQ QLRALTEAKK LASASAKLKI RKAMLTSKLS<br>KEQTLIKQHK QVWWQEYQRL NEVRCKMESE IKSLNNEENI GNECLCDLTN FEQELSEQQC<br>TYLKNVINPI QQLRADLKYR QHHTLQHSHP HIEFNSVKVL EEVDFVKKQL KTVFERLRLE<br>QQRIENDLSD WSIKILDHSL EEKTNPLSEL PIELESLECP YPDLKSSILS EFYKFTQKYQ<br>KKLQDFNLQL EDIYR |
| Cross-Reactivity: | Human  |
| Characteristics:  | Antibody reactive against mammalian transfected lysate.  |

## Target Details

|                   |  |
|-------------------|--|
| Target:           | CCDC148  |
| Alternative Name: | CCDC148 ( <a href="#">CCDC148 Products</a> )                                       |
| Background:       | Full Gene Name: coiled-coil domain containing 148<br>Synonyms: MGC125588,MGC125590 |
| Gene ID:          | 130940   |

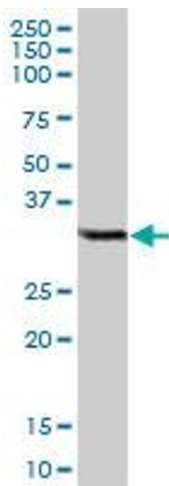
## Application Details

|                    |  |
|--------------------|--|
| Application Notes: | Optimal working dilution should be determined by the investigator. |
| Restrictions:      | For Research Use only  |

## Handling

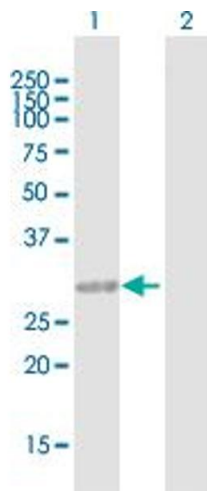
|                  |  |
|------------------|--|
| Buffer:          | In 1x PBS, pH 7.4  |
| Handling Advice: | Aliquot to avoid repeated freezing and thawing.                          |
| Storage:         | -20 °C   |
| Storage Comment: | Store at -20°C or lower. Aliquot to avoid repeated freezing and thawing. |

## Images



### Western Blotting

**Image 1.** LOC130940 MaxPab polyclonal antibody. Western Blot analysis of LOC130940 expression in human kidney.



### Western Blotting

**Image 2.** Western Blot analysis of CCDC148 expression in transfected 293T cell line by CCDC148 MaxPab polyclonal antibody.

Lane 1: LOC130940 transfected lysate(28.05 KDa).

Lane 2: Non-transfected lysate.