

Datasheet for ABIN949850
anti-WFDC3 antibody (AA 1-48)[Go to Product page](#)

2 Images

Overview

Quantity:	100 µg
Target:	WFDC3
Binding Specificity:	AA 1-48
Reactivity:	Human
Host:	Mouse
Clonality:	Monoclonal
Conjugate:	This WFDC3 antibody is un-conjugated
Application:	ELISA, Western Blotting (WB)

Product Details

Purpose:	Mouse monoclonal antibody raised against a full-length recombinant WFDC3.
Immunogen:	WFDC3 (AAH26014.2, 1 a.a. ~ 48 a.a) full-length recombinant protein with GST tag. MW of the GST tag alone is 26 KDa.
Sequence:	MDENCQAGEK CCKSGCGRFC VPPVLPPKLT MNPNWTVRSD SELEIPVP
Clone:	5C12
Isotype:	IgG1
Cross-Reactivity:	Human
Characteristics:	Antibody Reactive Against Recombinant Protein.

Target Details

Target:	WFDC3
Alternative Name:	WFDC3 (WFDC3 Products)
Background:	Full Gene Name: WAP four-disulfide core domain 3 Synonyms: WAP14,dJ447F3.3
Gene ID:	140686

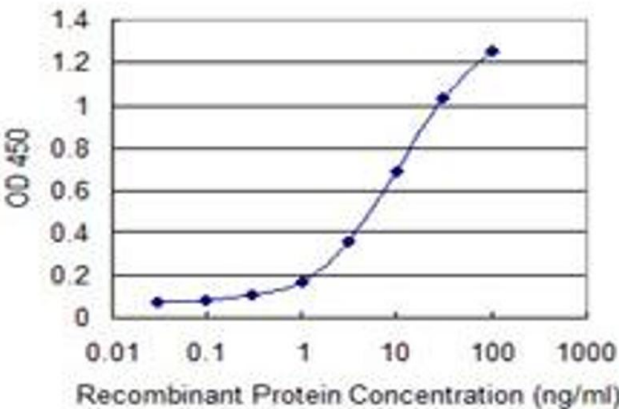
Application Details

Application Notes:	Optimal working dilution should be determined by the investigator.
Restrictions:	For Research Use only

Handling

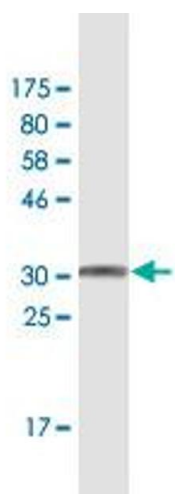
Buffer:	In 1x PBS, pH 7.4
Handling Advice:	Aliquot to avoid repeated freezing and thawing.
Storage:	-20 °C
Storage Comment:	Store at -20°C or lower. Aliquot to avoid repeated freezing and thawing.

Images



ELISA

Image 1. Detection limit for recombinant GST tagged WFDC3 is 0.1 ng/ml as a capture antibody.



Western Blotting

Image 2. Western Blot detection against Immunogen (31.7 kDa) .