



[Go to Product page](#)

Datasheet for ABIN949853

## anti-SCP2D1 antibody (AA 1-156)

### 2 Images

#### Overview

Quantity:	100 µg
Target:	SCP2D1
Binding Specificity:	AA 1-156
Reactivity:	Human
Host:	Mouse
Clonality:	Monoclonal
Conjugate:	This SCP2D1 antibody is un-conjugated
Application:	Western Blotting (WB), ELISA

#### Product Details

Purpose:	Mouse monoclonal antibody raised against a full-length recombinant C20orf79.
Immunogen:	C20orf79 (NP_848578.1, 1 a.a. ~ 156 a.a) full-length recombinant protein with GST tag. MW of the GST tag alone is 26 KDa.
Sequence:	MWKRSDHQPK IKAEDGPLVG QFEVLGSPVE PAMPHPLELS EFESFPVFQD IRLHIREVGA QLVKKVNAVF QLDITKNGKT ILRWTIDLKN GSGDMYPGPA RLPADTVFTI PESVFMELVL GKMNPQKAFL AGKFKVSGKV LLSWKLERVF KDWAKF
Clone:	3C11
Isotype:	IgG2a
Cross-Reactivity:	Human
Characteristics:	Antibody Reactive Against Recombinant Protein.

## Target Details

Target:	SCP2D1
Alternative Name:	C20orf79 ( <a href="#">SCP2D1 Products</a> )
Background:	Full Gene Name: chromosome 20 open reading frame 79 Synonyms: HSD22,MGC138229,dJ1068E13.2
Gene ID:	140856
NCBI Accession:	<a href="#">NM_178483</a>

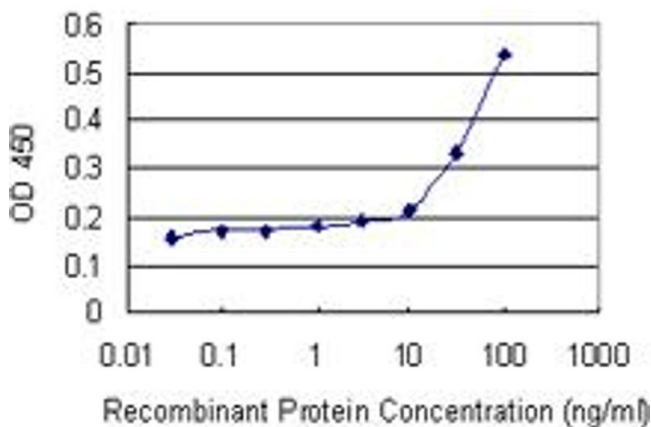
## Application Details

Application Notes:	Optimal working dilution should be determined by the investigator.
Restrictions:	For Research Use only

## Handling

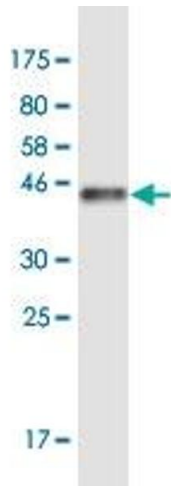
Buffer:	In 1x PBS, pH 7.4
Handling Advice:	Aliquot to avoid repeated freezing and thawing.
Storage:	-20 °C
Storage Comment:	Store at -20°C or lower. Aliquot to avoid repeated freezing and thawing.

## Images



### ELISA

**Image 1.** Detection limit for recombinant GST tagged C20orf79 is 3 ng/ml as a capture antibody.



### Western Blotting

**Image 2.** Western Blot detection against Immunogen (44.1 kDa).