



Datasheet for ABIN949866
anti-GTSF1L antibody (AA 1-148)



[Go to Product page](#)

3 Images

Overview

Quantity:	100 µg
Target:	GTSF1L
Binding Specificity:	AA 1-148
Reactivity:	Human
Host:	Mouse
Clonality:	Monoclonal
Conjugate:	This GTSF1L antibody is un-conjugated
Application:	ELISA, Western Blotting (WB)

Product Details

Purpose:	Mouse monoclonal antibody raised against a full-length recombinant GTSF1L.
Immunogen:	GTSF1L (NP_789761.1, 1 a.a. ~ 148 a.a) full-length recombinant protein with GST tag. MW of the GST tag alone is 26 KDa.
Sequence:	MEPEAFEICP YDPHRIPLS RFQYHLASCR RKNPKKAKKM ATCKYNACHV VPIKNLEEHE AVCVNRSAGE EEDTENPLKV SPPSSEQNDD TQQVSPCLPS PDIWNVDGAN CQHVFVLKTF FPQKVVCEAD TKESARETSP QKILRPGQ
Clone:	5E7
Isotype:	IgG2a
Cross-Reactivity:	Human
Characteristics:	Antibody Reactive Against Recombinant Protein.

Target Details

Target:	GTSF1L
Alternative Name:	GTSF1L (GTSF1L Products)
Background:	Full Gene Name: gametocyte specific factor 1-like Synonyms: C20orf65,FAM112A,MGC50820,dJ1028D15.4
Gene ID:	149699
NCBI Accession:	NM_176791

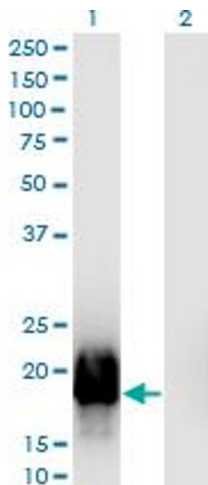
Application Details

Application Notes:	Optimal working dilution should be determined by the investigator.
Restrictions:	For Research Use only

Handling

Buffer:	In 1x PBS, pH 7.4
Handling Advice:	Aliquot to avoid repeated freezing and thawing.
Storage:	-20 °C
Storage Comment:	Store at -20°C or lower. Aliquot to avoid repeated freezing and thawing.

Images

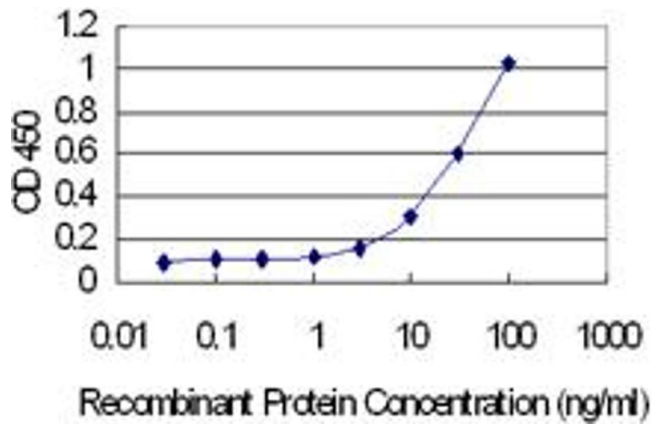


Western Blotting

Image 1. Western Blot analysis of GTSF1L expression in transfected 293T cell line by GTSF1L monoclonal antibody (M03), clone 5E7.

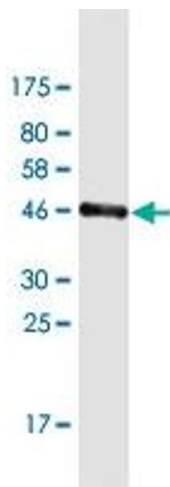
Lane 1: GTSF1L transfected lysate (Predicted MW: 16.9 kDa).

Lane 2: Non-transfected lysate.



ELISA

Image 2. Detection limit for recombinant GST tagged GTSF1L is 1 ng/ml as a capture antibody.



Western Blotting

Image 3. Western Blot detection against Immunogen (43.3 kDa).