



Datasheet for ABIN949869
anti-HSCB antibody (AA 1-235)



[Go to Product page](#)

1 Image

Overview

Quantity:	50 µg
Target:	HSCB
Binding Specificity:	AA 1-235
Reactivity:	Human
Host:	Mouse
Clonality:	Polyclonal
Conjugate:	This HSCB antibody is un-conjugated
Application:	Western Blotting (WB)

Product Details

Purpose:	Mouse polyclonal antibody raised against a full-length human HSCB protein.
Immunogen:	HSCB (NP_741999.3, 1 a.a. ~ 235 a.a) full-length human protein.
Sequence:	MWRGRAGALL RVWGFWPTGV PRRRPLSCDA ASQAGSNYPR CWNCGGPWGP GREDRFFCPQ CRALQAPDPT RDYFSLMDCN RSFRVD TAKL QHRYQQLQRL VHPDFFSQRS QTEKDFSEKH STLVNDAYKT LLAPLSRGLY LLKLHGIEIP ERTDYEMDRQ FLIEIMEINE KLAEAESEAA MKEIESIVKA KQKEFTDNVS SAFEQDDFEE AKEILTKMRY FSNIEEKIKL KKIPL
Cross-Reactivity:	Human
Characteristics:	Antibody reactive against mammalian transfected lysate.

Target Details

Target:	HSCB
---------	------

Target Details

Alternative Name:	HSCB (HSCB Products)
Background:	Full Gene Name: HscB iron-sulfur cluster co-chaperone homolog (E. coli) Synonyms: DNAJC20,HSC20,JAC1,MGC2637,MGC74462,dJ366L4.2
Gene ID:	150274
NCBI Accession:	NM_172002

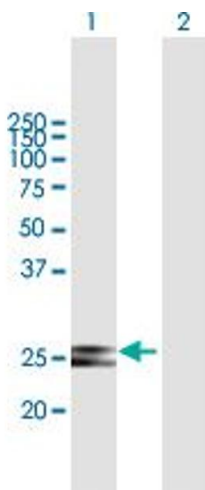
Application Details

Application Notes:	Optimal working dilution should be determined by the investigator.
Restrictions:	For Research Use only

Handling

Buffer:	In 1x PBS, pH 7.4
Handling Advice:	Aliquot to avoid repeated freezing and thawing.
Storage:	-20 °C
Storage Comment:	Store at -20°C or lower. Aliquot to avoid repeated freezing and thawing.

Images



Western Blotting

Image 1. Western Blot analysis of HSCB expression in transfected 293T cell line by HSCB MaxPab polyclonal antibody.

Lane 1: RP3-366L4.2 transfected lysate(25.85 KDa).

Lane 2: Non-transfected lysate.