



[Go to Product page](#)

Datasheet for ABIN949874

## anti-Phospholipase B antibody (AA 1-423)

1 Image

1 Publication

### Overview

Quantity:	50 µg
Target:	Phospholipase B (PLB)
Binding Specificity:	AA 1-423
Reactivity:	Human
Host:	Mouse
Clonality:	Polyclonal
Conjugate:	This Phospholipase B antibody is un-conjugated
Application:	Western Blotting (WB)

### Product Details

Purpose:	Mouse polyclonal antibody raised against a full-length human PLB1 protein.
Immunogen:	PLB1 (AAH42674.1, 1 a.a. ~ 423 a.a) full-length human protein.
Sequence:	MPITCPTQNE PFLRTPRNSN YTYPIKPAIE NWGSDFLCTE WKASNSVPTS VHQLRPADIK VVAALGDSL TAVGARPNN SDLPTSWRGL SWSIGGDGNL ETHHTLPNIL KKFNPYLLGF STSTWEGTAG LNVAEGARA RDMPAQAWDL LERMKNSPDI NLEKDWKLV LFIGVNDLCH YCENPEAHLA TEYVQHIQQA LDILSEELPR AFVNVVEVME LASLYQGQGG KCAMLAAQNN CTCLRHSQSS LEKQELKKVN WNLQHGISSF SYWHQYTQRE DFAVVQPFF QNTLTPLNER GDTDLTFFSE DCFHFSDRGH AEMAIALWNN MLEPVGRKTT SNNFTHSRAK LKCPSPESPY LYTLRNSRLL PDQAEAEPEV LYWAVPVAAG VGLVVGIIGT VVWRCRRGGR REDPPMSLRT VAL
Cross-Reactivity:	Human
Characteristics:	Antibody reactive against mammalian transfected lysate.

## Target Details

---

Target:	Phospholipase B (PLB)
Alternative Name:	PLB1 ( <a href="#">PLB Products</a> )
Background:	Full Gene Name: phospholipase B1 Synonyms: PLB
Gene ID:	151056

## Application Details

---

Application Notes:	Optimal working dilution should be determined by the investigator.
Restrictions:	For Research Use only

## Handling

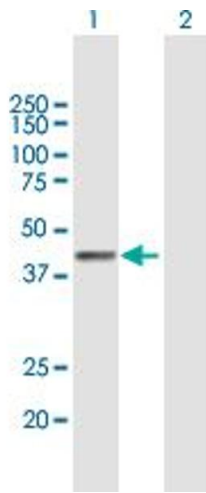
---

Buffer:	In 1x PBS, pH 7.4
Handling Advice:	Aliquot to avoid repeated freezing and thawing.
Storage:	-20 °C
Storage Comment:	Store at -20°C or lower. Aliquot to avoid repeated freezing and thawing.

## Publications

---

Product cited in:	Asano, Nelson-Harrington, Travis: "Phospholipase B is activated in response to sterol removal and stimulates acrosome exocytosis in murine sperm." in: <b>The Journal of biological chemistry</b> , Vol. 288, Issue 39, pp. 28104-15, (2013) ( <a href="#">PubMed</a> ).
-------------------	--



### Western Blotting

**Image 1.** Western Blot analysis of PLB1 expression in transfected 293T cell line by PLB1 MaxPab polyclonal antibody.

Lane 1: PLB1 transfected lysate(46.53 KDa).

Lane 2: Non-transfected lysate.