

Datasheet for ABIN949895
anti-MPZL3 antibody (AA 1-235)



[Go to Product page](#)

1 Image

Overview

Quantity:	50 µg
Target:	MPZL3
Binding Specificity:	AA 1-235
Reactivity:	Human
Host:	Mouse
Clonality:	Polyclonal
Conjugate:	This MPZL3 antibody is un-conjugated
Application:	Western Blotting (WB)

Product Details

Purpose:	Mouse polyclonal antibody raised against a full-length human MPZL3 protein.
Immunogen:	MPZL3 (NP_938016.1, 1 a.a. ~ 235 a.a) full-length human protein.
Sequence:	<p>MQQRGAAGSR GCALFPLLGV LFFQGVYIVF SLEIRADAHV RGYVGEKIKL KCTFKSTSDV TDKLTIDWTY RPPSSSHTVS IFHYQSFQYP TTAGTFRDRI SWVGNVYKGD ASISISNPTI KDNQTFSCAV KNPPDVHHNI PMTELTVTER GFGTMLSSVA LLSILVFPVPS AVVVALLLVR MGRKAAGLKK RSRSGYKSS IEVSDDTDQE EEEACMARLC VRCAECLDSD YEETY</p>
Cross-Reactivity:	Human
Characteristics:	Antibody reactive against mammalian transfected lysate.

Target Details

Target:	MPZL3
---------	-------

Target Details

Alternative Name:	MPZL3 (MPZL3 Products)
Background:	Full Gene Name: myelin protein zero-like 3 Synonyms:
Gene ID:	196264
NCBI Accession:	NM_198275

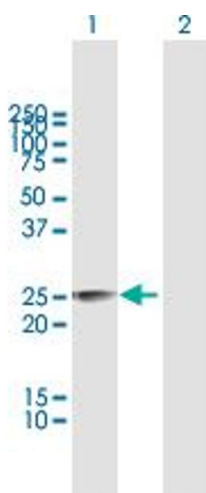
Application Details

Application Notes:	Optimal working dilution should be determined by the investigator.
Restrictions:	For Research Use only

Handling

Buffer:	In 1x PBS, pH 7.4
Handling Advice:	Aliquot to avoid repeated freezing and thawing.
Storage:	-20 °C
Storage Comment:	Store at -20°C or lower. Aliquot to avoid repeated freezing and thawing.

Images



Western Blotting

Image 1. Western Blot analysis of MPZL3 expression in transfected 293T cell line by MPZL3 MaxPab polyclonal antibody.

Lane 1: MPZL3 transfected lysate(25.85 kDa).

Lane 2: Non-transfected lysate.