



[Go to Product page](#)

Datasheet for ABIN949902
anti-DZIP1L antibody (AA 1-767)

1 Image

Overview

Quantity:	50 µg
Target:	DZIP1L
Binding Specificity:	AA 1-767
Reactivity:	Human
Host:	Mouse
Clonality:	Polyclonal
Conjugate:	This DZIP1L antibody is un-conjugated
Application:	Western Blotting (WB)

Product Details

Purpose:	Mouse polyclonal antibody raised against a full-length human DZIP1L protein.
Immunogen:	DZIP1L (NP_775814.1, 1 a.a. ~ 767 a.a) full-length human protein.
Sequence:	MQSPAATAEG LSGPLFGAYT FPTFKFQPRH DSMDWRRIST LDVDRVAREL DVATLQENIA GITFCNLDRE VCSRCGQPVD PALLKVLRLA QLIIEYLLHC QDCLSASVAQ LEARLQTSLG QQQRGQQELG RQADELKGVR EESRRRRKMI STLQQLMQT GTHSYHTCHL CDKTFMNATF LRGHIQRRHA GVAEGGKQKK QEQPVEEVLE ELRAKWKWTQ GELEAQREAE RQRQLQEAE IHQREIEAKK EFDKWKEQEW TKLYGEIDKL KKLFWDEFKN VAKQNSTLEE KLRALQSHSV MESKLGSLRD EESEEWLRQA RELQALREKT EIQKTEWKRK VKELHEEHMA EKKEQENQ RLQASLSQDQ KKAQAQSQQC ISTLRAQLQE QARIIASQEE MIQSLSLRKV EGIHKVPAK DTEEDSPEEE MEDSQDEQHK VLAALRRNPT LLKHFRPILE DTLEEKLESM GIRKDAKGIS IQTLRHLESL LRVQREQKAR KFSEFLSLRG KLVKEVTSRA KERQENGA AV SQPDGQPSVK SQQSALVTRE AQPKTRTLQV ALPSTPAEPP PPTRQSHGSH GSSLTQVSAP APHPGLHGPS

Product Details

STPPSSGPGM STPPFSSEED SEGDRVQRVS LQPPKVPSRM VPRPKDDWDW SDTETSEENA
QPPGQGSGTL VQSMVKNLEK QLEAPAKKPA GGVSLFFMPN AGPQRAATPG RKPQLSEDES
DLEISSLEDL PLDLQREKP KPLSRSLPE KFGTGPQSSG QPRVPAW

Cross-Reactivity: Human

Characteristics: Antibody reactive against mammalian transfected lysate.

Target Details

Target: DZIP1L

Alternative Name: DZIP1L ([DZIP1L Products](#))

Background: Full Gene Name: DAZ interacting protein 1-like
Synonyms: DZIP2,FLJ32844

Gene ID: 199221

NCBI Accession: [NM_173543](#)

Application Details

Application Notes: Optimal working dilution should be determined by the investigator.

Restrictions: For Research Use only

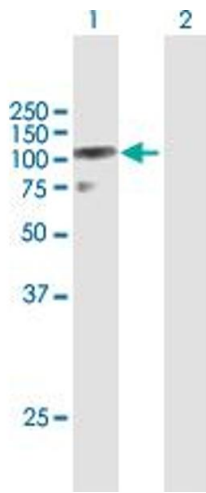
Handling

Buffer: In 1x PBS, pH 7.4

Handling Advice: Aliquot to avoid repeated freezing and thawing.

Storage: -20 °C

Storage Comment: Store at -20°C or lower. Aliquot to avoid repeated freezing and thawing.



Western Blotting

Image 1. Western Blot analysis of DZIP1L expression in transfected 293T cell line by DZIP1L MaxPab polyclonal antibody.

Lane 1: DZIP1L transfected lysate(84.37 KDa).

Lane 2: Non-transfected lysate.