

Datasheet for ABIN949903
anti-GGN antibody (AA 1-652)



[Go to Product page](#)

1 Image

Overview

Quantity:	50 µg
Target:	GGN
Binding Specificity:	AA 1-652
Reactivity:	Human
Host:	Mouse
Clonality:	Polyclonal
Conjugate:	This GGN antibody is un-conjugated
Application:	Western Blotting (WB)

Product Details

Purpose:	Mouse polyclonal antibody raised against a full-length human GGN protein.
Immunogen:	GGN (NP_689870.3, 1 a.a. ~ 652 a.a) full-length human protein.
Sequence:	<p>MGNLQSEPSA GGSRKVQPS DRAPDSRRTS LVEPEMTSQA MRLTRGLGVW FPGSATPPGL MVPREPQASP STLPLTLERP SPVMPPPEEA AAVSAPPPAP AGTLLPGPSK WQKPAGTPVP RIRRLLEASH RGQGDPPSLR PLKPPPPRQ LSVKDTVPRP PSQFPPPLET WKPPPPPLPSE RQPADRRITP ALATPASPT ESQAGPRNQG QTAGRARGGA PPHAGEGEMA QPADSEGLS LLCKITFKSR PSLAPPAASS SLAAKASLGG GGGGGLFAAS GAISYAEVLK QGPLPPGAAR PLGEVSRGAQ EAEGGDGDGE GCSGPPSAPA SQARALPPPP YTTFFGSKPK FDWVSAPDGP ERHFRFNGAG GGIGAPRRRA AALSGPWGSP PPPPEQIHS A PGRRRPAPAL LAPPTFIFPA PTNGEPMRPG PPGLQELPPL PPPTPPPTLQ PPALQPTPLP VAPPLTPGLG HKESALAPTA APALPPALAA DQAPAPSPAP APTVAEPSPP VSAPAPAAAAP IKTRTRRNKG SRAARGATRK DGLHGDGPRE RATATVPDSS GGGGGGSGAS QTGAANTRAA RHWLPPFQVLN SCPCKCYCHH</p>

Product Details

QPRHRRLPRN VSAWLSTSTN HLGEPPWVAT IKLSGSLVAK LEHYDLQATH SN

Cross-Reactivity: Human

Characteristics: Antibody reactive against mammalian transfected lysate.

Target Details

Target: GGN

Alternative Name: GGN ([GGN Products](#))

Background: Full Gene Name: gametogenetin
Synonyms: FLJ35713,MGC33369

Gene ID: 199720

NCBI Accession: [NM_152657](#)

Application Details

Application Notes: Optimal working dilution should be determined by the investigator.

Restrictions: For Research Use only

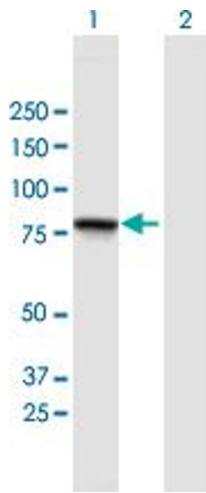
Handling

Buffer: In 1x PBS, pH 7.4

Handling Advice: Aliquot to avoid repeated freezing and thawing.

Storage: -20 °C

Storage Comment: Store at -20°C or lower. Aliquot to avoid repeated freezing and thawing.



Western Blotting

Image 1. Western Blot analysis of GGN expression in transfected 293T cell line by GGN MaxPab polyclonal antibody.

Lane 1: GGN transfected lysate(71.72 KDa).

Lane 2: Non-transfected lysate.