



[Go to Product page](#)

Datasheet for ABIN949912

## anti-ATXN7L1 antibody (AA 1-146)

### 3 Images

#### Overview

Quantity:	100 µg
Target:	ATXN7L1
Binding Specificity:	AA 1-146
Reactivity:	Human
Host:	Mouse
Clonality:	Monoclonal
Conjugate:	This ATXN7L1 antibody is un-conjugated
Application:	ELISA, Western Blotting (WB)

#### Product Details

Purpose:	Mouse monoclonal antibody raised against a full-length recombinant ATXN7L1.
Immunogen:	ATXN7L1 (NP_689962.1, 1 a.a. ~ 146 a.a) full-length recombinant protein with GST tag. MW of the GST tag alone is 26 KDa.
Sequence:	MTSERSRIPC LSAAA AEGTG KKQQEGRAMA TLDRKVPSPE AFLGKPWSSW IDAAKLHCSD NVDLEEAGKE GGKSREVMRL NKEDMHLFGH YPAHDDFYLV VCSACNQVVK PQVFQSHCGR KQDNRRNEGI SRSGPESSQA IEKHQV
Clone:	1H2
Isotype:	IgG2a
Cross-Reactivity:	Human
Characteristics:	Antibody Reactive Against Recombinant Protein.

## Target Details

Target:	ATXN7L1
Alternative Name:	ATXN7L1 ( <a href="#">ATXN7L1 Products</a> )
Background:	Full Gene Name: ataxin 7-like 1 Synonyms: ATXN7L4,FLJ40255,FLJ58242,KIAA1218,MGC10760,MGC33190
Gene ID:	222255
NCBI Accession:	<a href="#">NM_152749</a>

## Application Details

Application Notes:	Optimal working dilution should be determined by the investigator.
Restrictions:	For Research Use only

## Handling

Buffer:	In 1x PBS, pH 7.4
Handling Advice:	Aliquot to avoid repeated freezing and thawing.
Storage:	-20 °C
Storage Comment:	Store at -20°C or lower. Aliquot to avoid repeated freezing and thawing.

## Images

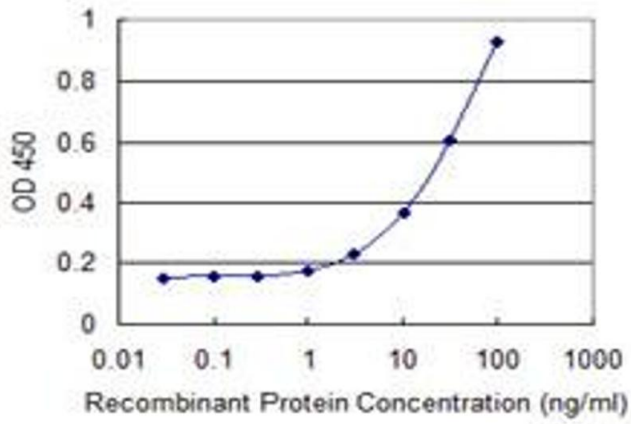


### Western Blotting

**Image 1.** Western Blot analysis of ATXN7L1 expression in transfected 293T cell line by ATXN7L1 monoclonal antibody (M06), clone 1H2.

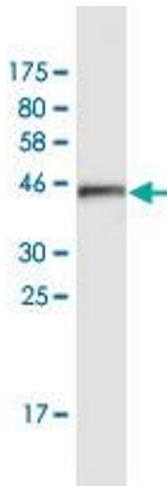
Lane 1: ATXN7L1 transfected lysate(16.2 KDa).

Lane 2: Non-transfected lysate.



### ELISA

**Image 2.** Detection limit for recombinant GST tagged ATXN7L1 is 1 ng/ml as a capture antibody.



### Western Blotting

**Image 3.** Western Blot detection against Immunogen (42.6 kDa).