



Datasheet for ABIN949928
anti-GAS2L3 antibody (AA 1-694)



[Go to Product page](#)

3 Images

Overview

Quantity:	100 µL
Target:	GAS2L3
Binding Specificity:	AA 1-694
Reactivity:	Human
Host:	Rabbit
Clonality:	Polyclonal
Conjugate:	This GAS2L3 antibody is un-conjugated
Application:	Western Blotting (WB), Immunoprecipitation (IP)

Product Details

Purpose:	Rabbit polyclonal antibody raised against a full-length human GAS2L3 protein.
Immunogen:	GAS2L3 (NP_777602.1, 1 a.a. ~ 694 a.a) full-length human protein.
Sequence:	<p>MQPAIQVWFG EDLPLSPRSP LTPRHGPGLA NVCQYDEWIA VRHEATLLPM QEDLSIWLSG LLGIKVKAEK LLEELDNGVL LCQLIDVLQN MVKTCNSEES GNFPMRKVPC KKDAASGSFF ARDNTANFLH WCRDIGVDET YLFESEGLVL HKDPRQVYLC LLEIGRIVSR YGVEPPVLVK LEKEIELEET LLNTSGPEDS ISIPKSCCRH EELHEAVKHI AEDPPCSCSH RFSIEYLSEG RYRLGDKILF IRMLHGKHVM VRVGGGWDTL QGFLLKYDPC RILQFATLEQ KILAFQKGVS NESVPDSPAR TPQPPEMNPL SAVNMFQKQN SKPSVPVSIP KSKEKQGRPP GALVPASSLK GGNLGMSVR SKLPNSPAAS SHPKLKSSKG ITKKPQAPSN NASSSLASLN PVGKNTSSPA LPRTAPCISE SPRKCISSPN TPKAKVIPAQ NSADLPESTL LPNKCSGKTQ PKYLKHNHIS SRDNAVSHLA AHSNSSSKCP KLPKANIPVR PKPSFQSSAK MTKTSSKTIA TGLGTQSQPS DGAPQAKPVP AQKLKSALNL NQPVSVSSVS PVKATQKSKD KNIVSATKKQ PQNKSAFQKT</p>

Product Details

GPSSLKSPGR TPLSIVSLPQ SSTKTQTAPK SAQTVAKSQH STKGPPRSGK TPASIRKPPS
SVKDADSGDK KPTAKKKEDD DHYFVMTGSK KPRK

Cross-Reactivity: Human

Characteristics: Antibody reactive against mammalian transfected lysate.

Target Details

Target: GAS2L3

Alternative Name: GAS2L3 ([GAS2L3 Products](#))

Background: Full Gene Name: growth arrest-specific 2 like 3

Synonyms:

Gene ID: 283431

NCBI Accession: [NM_174942](#)

Application Details

Application Notes: Optimal working dilution should be determined by the investigator.

Restrictions: For Research Use only

Handling

Format: Liquid

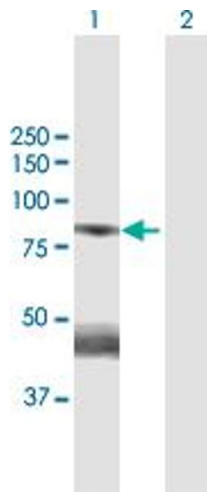
Buffer: No additive

Preservative: Without preservative

Handling Advice: Aliquot to avoid repeated freezing and thawing.

Storage: -20 °C

Storage Comment: Store at -20°C or lower. Aliquot to avoid repeated freezing and thawing.

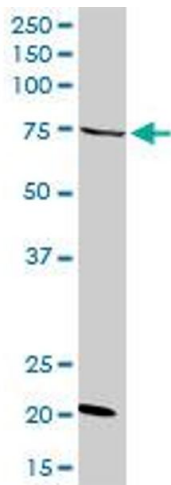


Western Blotting

Image 1. Western Blot analysis of GAS2L3 expression in transfected 293T cell line by GAS2L3 MaxPab polyclonal antibody.

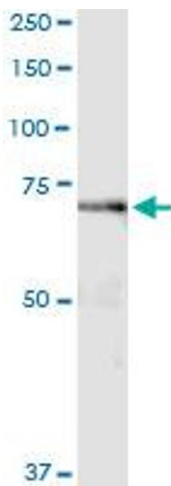
Lane 1: GAS2L3 transfected lysate(75.2 KDa).

Lane 2: Non-transfected lysate.



Western Blotting

Image 2. GAS2L3 MaxPab rabbit polyclonal antibody. Western Blot analysis of GAS2L3 expression in HeLa.



Immunoprecipitation

Image 3. Immunoprecipitation of GAS2L3 transfected lysate using anti-GAS2L3 MaxPab rabbit polyclonal antibody and Protein A Magnetic Bead , and immunoblotted with GAS2L3 purified MaxPab mouse polyclonal antibody (B01P)