

Datasheet for ABIN949932
anti-ERICH2 antibody (AA 1-156)



[Go to Product page](#)

2 Images

Overview

Quantity:	100 µg
Target:	ERICH2
Binding Specificity:	AA 1-156
Reactivity:	Human
Host:	Mouse
Clonality:	Monoclonal
Conjugate:	This ERICH2 antibody is un-conjugated
Application:	ELISA, Western Blotting (WB)

Product Details

Purpose:	Mouse monoclonal antibody raised against a full-length recombinant LOC285141.
Immunogen:	LOC285141 (XP_209489.1, 1 a.a. ~ 156 a.a) full-length recombinant protein with GST tag. MW of the GST tag alone is 26 KDa.
Sequence:	METVNEPETG EVSKDAVIVK QEKNNEYCLQ DIDDKLSESA EDDGEDDTND EDDDEDSNPK KNTQAPLELM AEFLRAEMAR EYQLAKKLCQ MILIYEPENP EAKEFFTLIE EMLLMKQTQN HEQDGENSDE DSSGESKGES DEELSDESSD EGEDGS
Clone:	3H1
Isotype:	IgG1
Cross-Reactivity:	Human
Characteristics:	Antibody Reactive Against Recombinant Protein.

Target Details

Target:	ERICH2
Abstract:	ERICH2 Products
Background:	Full Gene Name: similar to CG14853-PB Synonyms:
Gene ID:	285141
NCBI Accession:	XM_209489

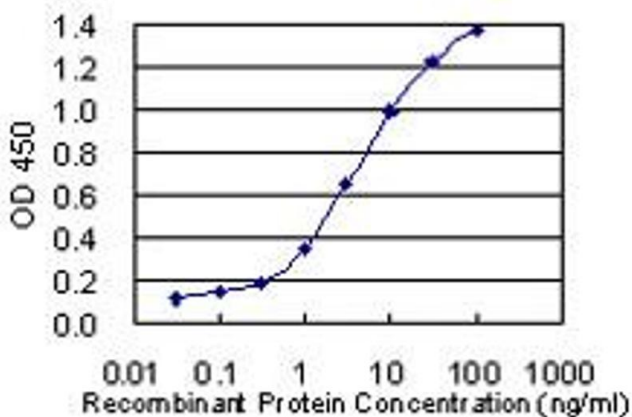
Application Details

Application Notes:	Optimal working dilution should be determined by the investigator.
Restrictions:	For Research Use only

Handling

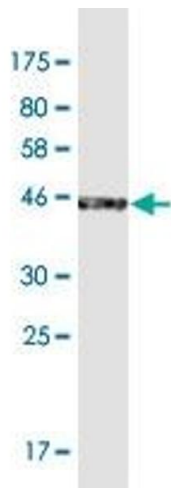
Buffer:	In 1x PBS, pH 7.4
Handling Advice:	Aliquot to avoid repeated freezing and thawing.
Storage:	-20 °C
Storage Comment:	Store at -20°C or lower. Aliquot to avoid repeated freezing and thawing.

Images



ELISA

Image 1. Detection limit for recombinant GST tagged LOC285141 is 0.03 ng/ml as a capture antibody.



Western Blotting

Image 2. Western Blot detection against Immunogen (44.1 kDa).