



[Go to Product page](#)

Datasheet for ABIN949934

## anti-C3orf38 antibody (AA 1-327)

### 1 Image

#### Overview

Quantity:	50 µg
Target:	C3orf38
Binding Specificity:	AA 1-327
Reactivity:	Human
Host:	Mouse
Clonality:	Polyclonal
Conjugate:	This C3orf38 antibody is un-conjugated
Application:	Western Blotting (WB)

#### Product Details

Purpose:	Mouse polyclonal antibody raised against a full-length human C3orf38 protein.
Immunogen:	C3orf38 (NP_776185.1, 1 a.a. ~ 327 a.a) full-length human protein.
Sequence:	MSGLSFSEME GCRNLLGLLD NDEIMALCDT VTNRLVQPQD RQDAVHAILA YSQSAEELLR RRKVHREVIF KYLATQGIVI PPATEKHNL I QHAKDYWQKQ PQLKCLKETPE PVTKTEDIHL FQQQVKEDKK AEKVDFRRLG EEFCHWFFGL LNSQNPFLGP PQDEWGPQHF WHDVKLRFFY NTSEQNVMDY HGAEIVSLRL LSLVKEEFLF LSPNLDSHGL KCASSPHGLV MGVGAGTVHR GNTCLGIFEQ IFGLIRCPFV ENTWKIKFIN LKIMGESSLA PGTLPKPSVK FEQSDLEAFY NVITVCGTNE VRHNVKQASD SGTGDQV
Cross-Reactivity:	Human
Characteristics:	Antibody reactive against mammalian transfected lysate.

## Target Details

Target:	C3orf38
Alternative Name:	C3orf38 ( <a href="#">C3orf38 Products</a> )
Background:	Full Gene Name: chromosome 3 open reading frame 38 Synonyms: FLJ54270,MGC26717
Gene ID:	285237
NCBI Accession:	<a href="#">NM_173824</a>

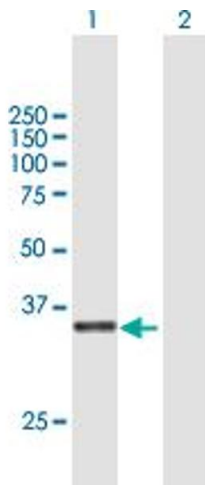
## Application Details

Application Notes:	Optimal working dilution should be determined by the investigator.
Restrictions:	For Research Use only

## Handling

Buffer:	In 1x PBS, pH 7.4
Handling Advice:	Aliquot to avoid repeated freezing and thawing.
Storage:	-20 °C
Storage Comment:	Store at -20°C or lower. Aliquot to avoid repeated freezing and thawing.

## Images



### Western Blotting

**Image 1.** Western Blot analysis of C3orf38 expression in transfected 293T cell line by C3orf38 MaxPab polyclonal antibody.

Lane 1: C3orf38 transfected lysate(35.97 KDa).

Lane 2: Non-transfected lysate.