



[Go to Product page](#)

Datasheet for ABIN949951
anti-FIGLA antibody (AA 1-219)

1 Image

Overview

Quantity:	50 µg
Target:	FIGLA
Binding Specificity:	AA 1-219
Reactivity:	Human
Host:	Mouse
Clonality:	Polyclonal
Conjugate:	This FIGLA antibody is un-conjugated
Application:	Western Blotting (WB)

Product Details

Purpose:	Mouse polyclonal antibody raised against a full-length human FIGLA protein.
Immunogen:	FIGLA (AAI48799.1, 1 a.a. ~ 219 a.a) full-length human protein.
Sequence:	MDPAPGVLDP RAAPPALLGT PQAEVLEDVL REQFGPLPQL AAVCRLKRLP SGGYSSTENL QLVLERRRVA NAKERERIKN LNRGFARLKA LVPFLPQSRK PSKVDILKGA TEYIQVLSDL LEGAKDSKKQ DPDEQSYSNN SSESHTSSAR QLSRNITQHI SCAFGLKNEE EGPWADGGSG EPAHACRHSV MSTTEIISPT RSLDRFPEVE LLSHRLPQV
Cross-Reactivity:	Human
Characteristics:	Antibody reactive against mammalian transfected lysate.

Target Details

Target:	FIGLA
---------	-------

Target Details

Alternative Name:	FIGLA (FIGLA Products)
Background:	Full Gene Name: folliculogenesis specific basic helix-loop-helix Synonyms: POF6,bHLHc8
Gene ID:	344018

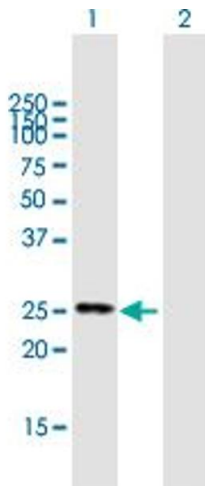
Application Details

Application Notes:	Optimal working dilution should be determined by the investigator.
Restrictions:	For Research Use only

Handling

Buffer:	In 1x PBS, pH 7.4
Handling Advice:	Aliquot to avoid repeated freezing and thawing.
Storage:	-20 °C
Storage Comment:	Store at -20°C or lower. Aliquot to avoid repeated freezing and thawing.

Images



Western Blotting

Image 1. Western Blot analysis of FIGLA expression in transfected 293T cell line by FIGLA MaxPab polyclonal antibody.

Lane 1: FIGLA transfected lysate(24.09 kDa).

Lane 2: Non-transfected lysate.