



Datasheet for ABIN949960  
**anti-NHLRC2 antibody (AA 1-367)**



[Go to Product page](#)

2 Images

Overview

Quantity:	50 µg
Target:	NHLRC2
Binding Specificity:	AA 1-367
Reactivity:	Human
Host:	Mouse
Clonality:	Polyclonal
Conjugate:	This NHLRC2 antibody is un-conjugated
Application:	Western Blotting (WB)

Product Details

Purpose:	Mouse polyclonal antibody raised against a full-length human NHLRC2 protein.
Immunogen:	NHLRC2 (AAH32598.1, 1 a.a. ~ 367 a.a) full-length human protein.
Sequence:	MAGTHQIWAL LLDSGKLPKK NELTKGTCLR FAGSGNEENR NNAYPHKAGF AQPSGLSLAS EDPWSCLFVA DSESSTVRTV SLKDGAVKHL VGGERDPMNL FAFGDVDGVG INAKLQHPLG VTWDKKRLL YVADSYNHKI KVVDPKTKNC TTLAGTGDTN NVTSSSFTE TFNEPGGLCI GENGELLYVA DTNNHQIKVM DLETKMVSVL PIFRSENAV V DGPFLVEKQK TLPKLPKSAP SIRLSPVTAC AGQTLQFKLR LDLPSGSKLT EGVSSCWFLT AEGNEWLLQG QIAAGDIENI SSQPTISLQI PDDCLSLEAI VSVSVFLYYC SADSSACMMK AILFSQPLQI TDTQQGCIAP VELRYVF
Cross-Reactivity:	Human
Characteristics:	Antibody reactive against mammalian transfected lysate.

## Target Details

Target:	NHLRC2
Alternative Name:	NHLRC2 ( <a href="#">NHLRC2 Products</a> )
Background:	Full Gene Name: NHL repeat containing 2 Synonyms: DKFZp779F115,FLJ20147,FLJ25621,FLJ33312,MGC45492
Gene ID:	374354

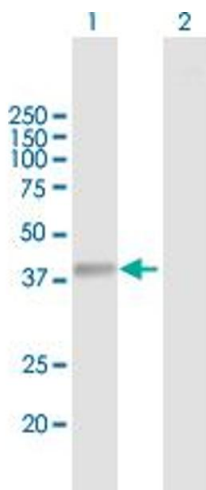
## Application Details

Application Notes:	Optimal working dilution should be determined by the investigator.
Restrictions:	For Research Use only

## Handling

Buffer:	In 1x PBS, pH 7.4
Handling Advice:	Aliquot to avoid repeated freezing and thawing.
Storage:	-20 °C
Storage Comment:	Store at -20°C or lower. Aliquot to avoid repeated freezing and thawing.

## Images

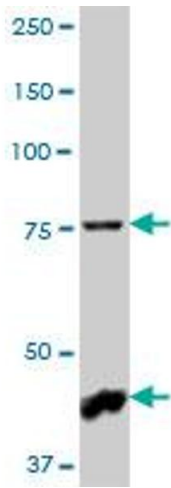


### Western Blotting

**Image 1.** Western Blot analysis of NHLRC2 expression in transfected 293T cell line by NHLRC2 MaxPab polyclonal antibody.

Lane 1: NHLRC2 transfected lysate(40.37 KDa).

Lane 2: Non-transfected lysate.



### Western Blotting

**Image 2.** NHLRC2 MaxPab polyclonal antibody. Western Blot analysis of NHLRC2 expression in human pancreas.