



[Go to Product page](#)

Datasheet for ABIN949969

anti-ZCCHC13 antibody (AA 1-166)

3 Images

Overview

Quantity:	100 µg
Target:	ZCCHC13
Binding Specificity:	AA 1-166
Reactivity:	Human
Host:	Mouse
Clonality:	Monoclonal
Conjugate:	This ZCCHC13 antibody is un-conjugated
Application:	ELISA, Western Blotting (WB)

Product Details

Purpose:	Mouse monoclonal antibody raised against a full-length recombinant ZCCHC13.
Immunogen:	ZCCHC13 (NP_976048.1, 1 a.a. ~ 166 a.a) full-length recombinant protein with GST tag. MW of the GST tag alone is 26 KDa.
Sequence:	MSSKDFACG HSGHWARGCP RGGAGGRRGG GHGRGSQCGS TTLSYTCYCC GESGRNAKNC VLLGNICYNC GRSGHIAKDC KDPKRERRQH CYTCGRLGHL ARDCDRQKEQ KCYSCGKLGH IQKDCAQVKC YRCGEIGHVA INCSKARPGQ LLPLRQIPTS SQGMSQ
Clone:	4G11
Isotype:	IgG2a
Cross-Reactivity:	Human
Characteristics:	Antibody Reactive Against Recombinant Protein.

Target Details

Target:	ZCCHC13
Alternative Name:	ZCCHC13 (ZCCHC13 Products)
Background:	Full Gene Name: zinc finger, CCHC domain containing 13 Synonyms: Cnbp2,ZNF9L
Gene ID:	389874
NCBI Accession:	NM_203303

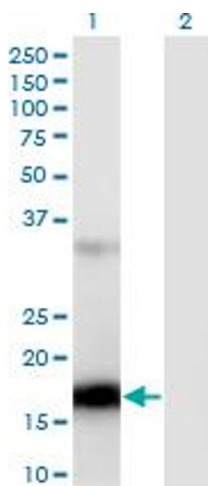
Application Details

Application Notes:	Optimal working dilution should be determined by the investigator.
Restrictions:	For Research Use only

Handling

Buffer:	In 1x PBS, pH 7.4
Handling Advice:	Aliquot to avoid repeated freezing and thawing.
Storage:	-20 °C
Storage Comment:	Store at -20°C or lower. Aliquot to avoid repeated freezing and thawing.

Images

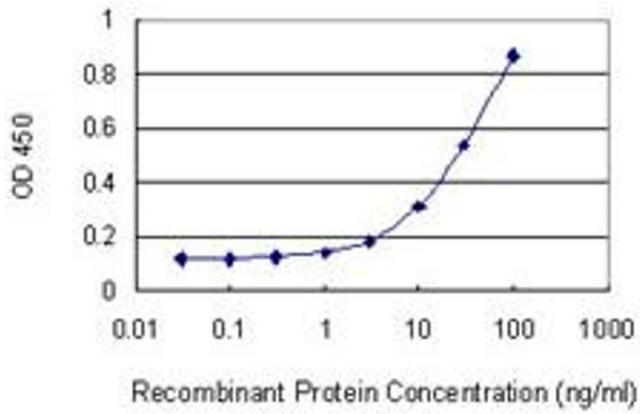


Western Blotting

Image 1. Western Blot analysis of ZCCHC13 expression in transfected 293T cell line by ZCCHC13 monoclonal antibody (M02), clone 4G11.

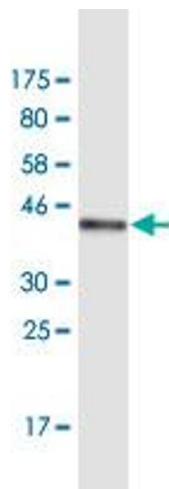
Lane 1: ZCCHC13 transfected lysate (Predicted MW: 18 kDa).

Lane 2: Non-transfected lysate.



ELISA

Image 2. Detection limit for recombinant GST tagged ZCCHC13 is 1 ng/ml as a capture antibody.



Western Blotting

Image 3. Western Blot detection against Immunogen (44.4 kDa).