



[Go to Product page](#)

Datasheet for ABIN949977

anti-CARD17 antibody (AA 1-110)

2 Images

Overview

Quantity:	200 µL
Target:	CARD17
Binding Specificity:	AA 1-110
Reactivity:	Human
Host:	Mouse
Clonality:	Monoclonal
Conjugate:	This CARD17 antibody is un-conjugated
Application:	ELISA, Western Blotting (WB)

Product Details

Purpose:	Mouse monoclonal antibody raised against a full-length recombinant CARD17.
Immunogen:	CARD17 (NP_001007233.1, 1 a.a. ~ 110 a.a) full-length recombinant protein with GST tag. MW of the GST tag alone is 26 KDa.
Sequence:	MADKVLKEKR KQFIRSVGEG TINGLLGELL ETRVLSQEEI EIVKCENATV MDKARALLDS VIRKGAPACQ ICITYICEED SHLAGTLGLS AGPTSGNHLT TQDSQIVLPS
Clone:	1G6
Isotype:	IgG2a kappa
Cross-Reactivity:	Human

Target Details

Target:	CARD17
Alternative Name:	CARD17 (CARD17 Products)
Background:	Full Gene Name: caspase recruitment domain family, member 17 Synonyms: INCA
Gene ID:	440068
NCBI Accession:	NP_001007233 , NM_001007232

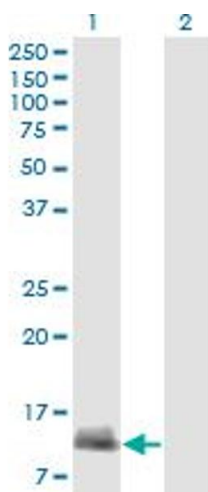
Application Details

Application Notes:	Optimal working dilution should be determined by the investigator.
Comment:	Product Quality tested by: Antibody Reactive Against Recombinant Protein.
Restrictions:	For Research Use only

Handling

Format:	Liquid
Buffer:	In ascites fluid
Handling Advice:	Aliquot to avoid repeated freezing and thawing.
Storage:	-20 °C
Storage Comment:	Store at -20°C or lower. Aliquot to avoid repeated freezing and thawing.

Images

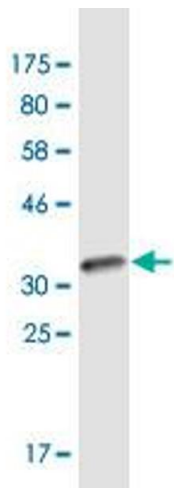


Western Blotting

Image 1. Western Blot analysis of CARD17 expression in transfected 293T cell line by CARD17 monoclonal antibody (M01A), clone 1G6.

Lane 1: CARD17 transfected lysate(11.9 kDa).

Lane 2: Non-transfected lysate.



Western Blotting

Image 2. Western Blot detection against Immunogen (38.3 KDa).