

Datasheet for ABIN950009
anti-ICAM1 antibody (AA 1-532)



[Go to Product page](#)

4 Images

Overview

Quantity:	100 µL
Target:	ICAM1
Binding Specificity:	AA 1-532
Reactivity:	Human
Host:	Rabbit
Clonality:	Polyclonal
Conjugate:	This ICAM1 antibody is un-conjugated
Application:	Western Blotting (WB), Immunoprecipitation (IP)

Product Details

Purpose:	Rabbit polyclonal antibody raised against a full-length human ICAM1 protein.
Immunogen:	ICAM1 (NP_000192.1, 1 a.a. ~ 532 a.a) full-length human protein.
Sequence:	MAPSSRPAL PALLVLLGAL FPGPGNAQTS VSPSKVILPR GGSVLVTCST SCDQPKLLGI ETPLPKKELL LPGNNRKVYE LSNVQEDSQP MCYSNCPDGQ STAKTFLTVY WTPERVELAP LPSWQPVGKN LTLRCQVEGG APRANLTVVL LRGEKELKRE PAVGEPAEVT TTVLVRRDHH GANFSCRTEL DLRPQGLELF ENTSAPYQLQ TFLVPATPPQ LVSPRVLEVD TQGTWVCSLD GLFPVSEAQV HLAGDQRLN PTVTYGNSDF SAKASVSVTA EDEGTQRLTC AVILGNQSQE TLQTVTIYSF PAPNVILTKP EVSEGTEVTV KCEAHPRAKV TLNGVPAQPL GPRAQLLLKA TPEDNGRSFS CSATLEVAGQ LIHKNQTRREL RVLYGPRLDE RDCPGNWTWP ENSQQTPMCQ AWGNPLPELK CLKDGTFFLP IGESVTVTRD LEGTYLCRAR STQGEVTREV TVNVLSPRYE IVIITVAAA VIMGTAGLST YLYNRQRKIK KYRLQQAQKG TPMKPNTQAT PP

Product Details

Cross-Reactivity:	Human, Mouse
Characteristics:	Antibody reactive against mammalian transfected lysate.

Target Details

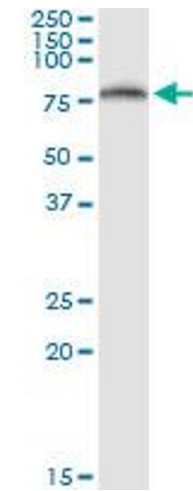
Target:	ICAM1
Alternative Name:	ICAM1 (ICAM1 Products)
Target Type:	Viral Protein
Background:	Full Gene Name: intercellular adhesion molecule 1 Synonyms: BB2,CD54,P3.58
Gene ID:	3383
NCBI Accession:	NM_000201
Pathways:	Cellular Response to Molecule of Bacterial Origin , Regulation of Actin Filament Polymerization , Carbohydrate Homeostasis , Regulation of Leukocyte Mediated Immunity , Thromboxane A2 Receptor Signaling

Application Details

Application Notes:	Optimal working dilution should be determined by the investigator.
Restrictions:	For Research Use only

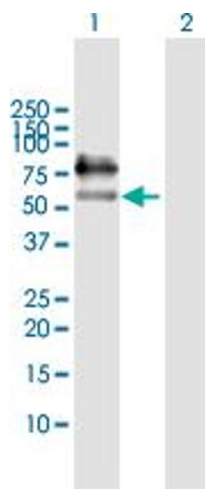
Handling

Format:	Liquid
Buffer:	No additive
Preservative:	Without preservative
Handling Advice:	Aliquot to avoid repeated freezing and thawing.
Storage:	-20 °C
Storage Comment:	Store at -20°C or lower. Aliquot to avoid repeated freezing and thawing.



Immunoprecipitation

Image 1. Immunoprecipitation of ICAM1 transfected lysate using anti-ICAM1 MaxPab rabbit polyclonal antibody and Protein A Magnetic Bead , and immunoblotted with ICAM1 purified MaxPab mouse polyclonal antibody (B01P) .

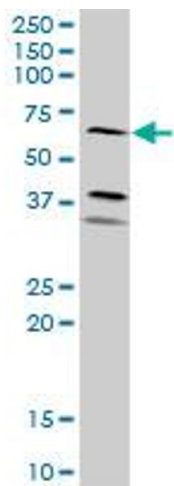


Western Blotting

Image 2. Western Blot analysis of ICAM1 expression in transfected 293T cell line by ICAM1 MaxPab polyclonal antibody.

Lane 1: ICAM1 transfected lysate(57.80 KDa).

Lane 2: Non-transfected lysate.



Western Blotting

Image 3. ICAM1 MaxPab rabbit polyclonal antibody. Western Blot analysis of ICAM1 expression in mouse liver.

Please check the [product details page](#) for more images. Overall 4 images are available for ABIN950009.